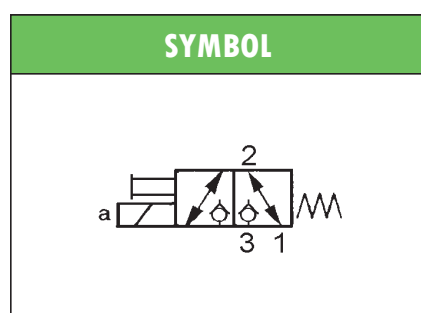
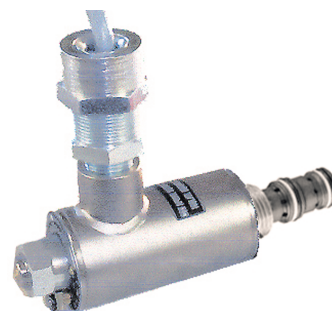


## HYDRAULIC SCREW-IN VALVES type **EVX-06-D5**

### **EX** EX-PROOF SOLENOID OPERATED – ATEX

- Suitable for standard cavity **M22**
- Ex-proof solenoid operated poppet valve
- 3-way valve, zero drops
- Solenoids according to ATEX 94/9/CE
- **ATEX code/class: CE 0722 / Ex II 2 G EEx d II CT5**
- Certificate: CESI 03 ATEX 212 (on request)
- Maximum operating pressure: 250bar
- Maximum flow rate: 25 l/min
- 100% duty cycle
- Steel body, poppet in hardened and grinded steel
- Mass 1,45kg (coil included)



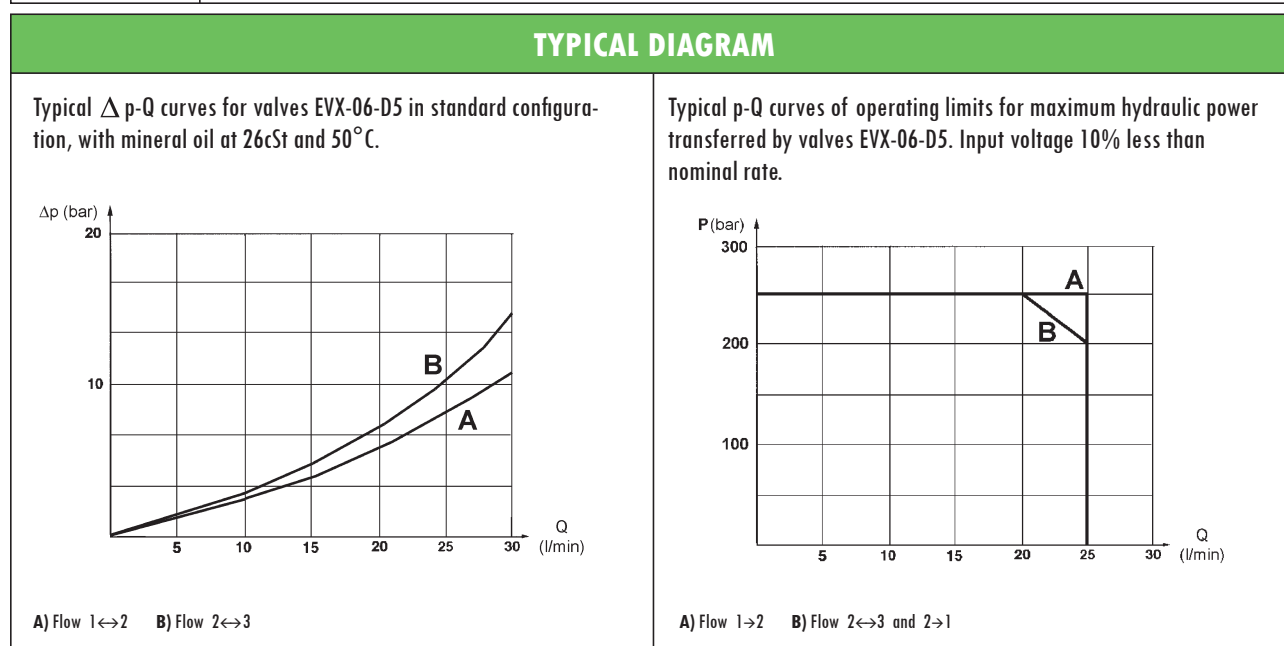
**ORDERING CODE**

**EVX-06-D5-\***

<b>EVX</b>	Ex-proof solenoid operated screw-in poppet valve
<b>06</b>	Normal port size
<b>D5</b>	Type

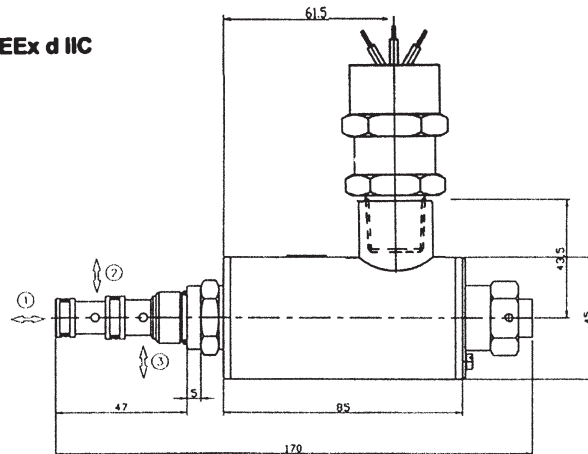
**ORDERING CODE**

<b>COIL</b>	Type GMA-6/EV – Nominal absorption: 11W
<b>Current data (*)</b>	<b>012C:</b> 12V DC-0,92A <b>024C:</b> 24V DC-0,46A <b>115A:</b> 115V AC-0,10A <b>230A:</b> 230V AC-0,05A
<b>Protection</b>	According to IEC144: class IP67 – External surfaces nickel coated (min. thickness 7 micron)
<b>Connection</b>	3x1,5mm <sup>2</sup> wire cable (CEI 20-22), length 1,5m already connected to coil. Electrical connection must be accordance to Exproof norm ATEX. Earth connection both internal, with yellow-green wire in the cable, and external with a minimum 4mm <sup>2</sup> cable fastened to earth screw.

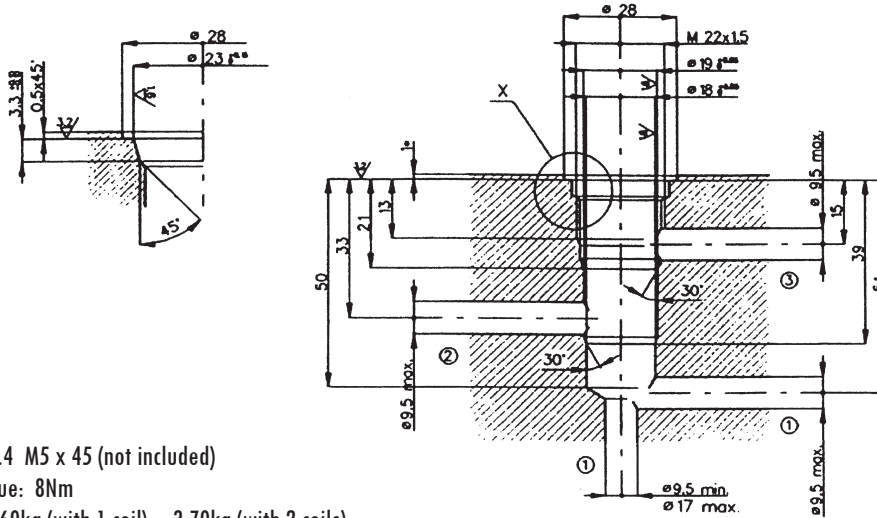


**OVERALL DIMENSIONS**

**Ex** II 2 G EEx d IIC



**DETAIL X**



Fixing bolts: n.4 M5 x 45 (not included)  
Tightening torque: 8Nm  
Valve mass: 2,60kg (with 1 coil) – 3,70kg (with 2 coils)

Subject to technical and dimensional changes without notice

**TYPICAL SECTION**

Non-Standard.  
Available on request