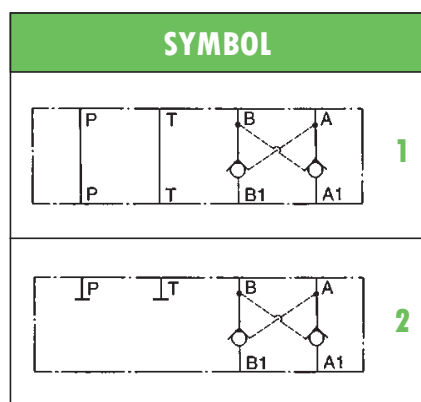


## HYDRAULIC COMPACT STACKABLE CHECK VALVES type **AMF-CP** PILOT OPERATED

- Hydraulic check valves pilot operated
- **AMF / HDF2** interface, stackable assembly
- Pilot ratio 1: 2,2
- Max operating pressure: 250 bar
- Max recommended flow: 20 l/min
- Mass: 0,40 kg
- Suitable for mineral oil according to ISO 18/16/14 filtration class or better. Recommended viscosity range: 10 to 60cSt



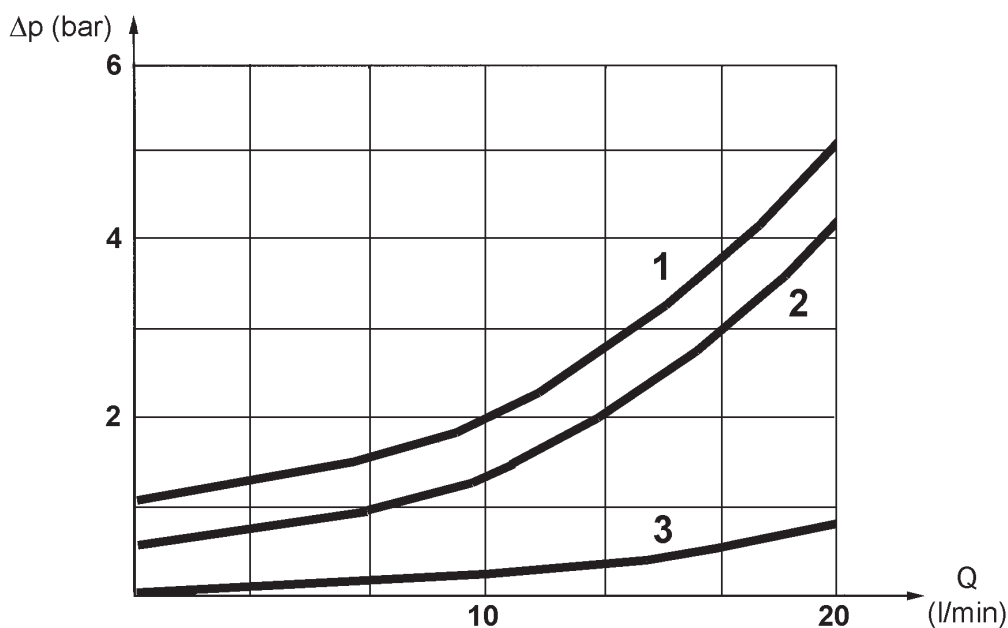
**ORDERING CODE**

**AMF(C) – CP – AB**

<b>AMF</b>	AMF compact stackable valve - P,T free (see symbol 1)
<b>(C)</b>	End of stackable module - P, T plugged (see symbol 2)
<b>CP</b>	Pilot operated check valve
<b>AB</b>	Dual check valve on A and B

**TYPICAL DIAGRAM**

Typical  $\Delta p$ -Q curves for valves **AMF-CP**, with mineral oil at 36cSt and 50°C for flow A1 ↔ A, B1 ↔ B and free channels

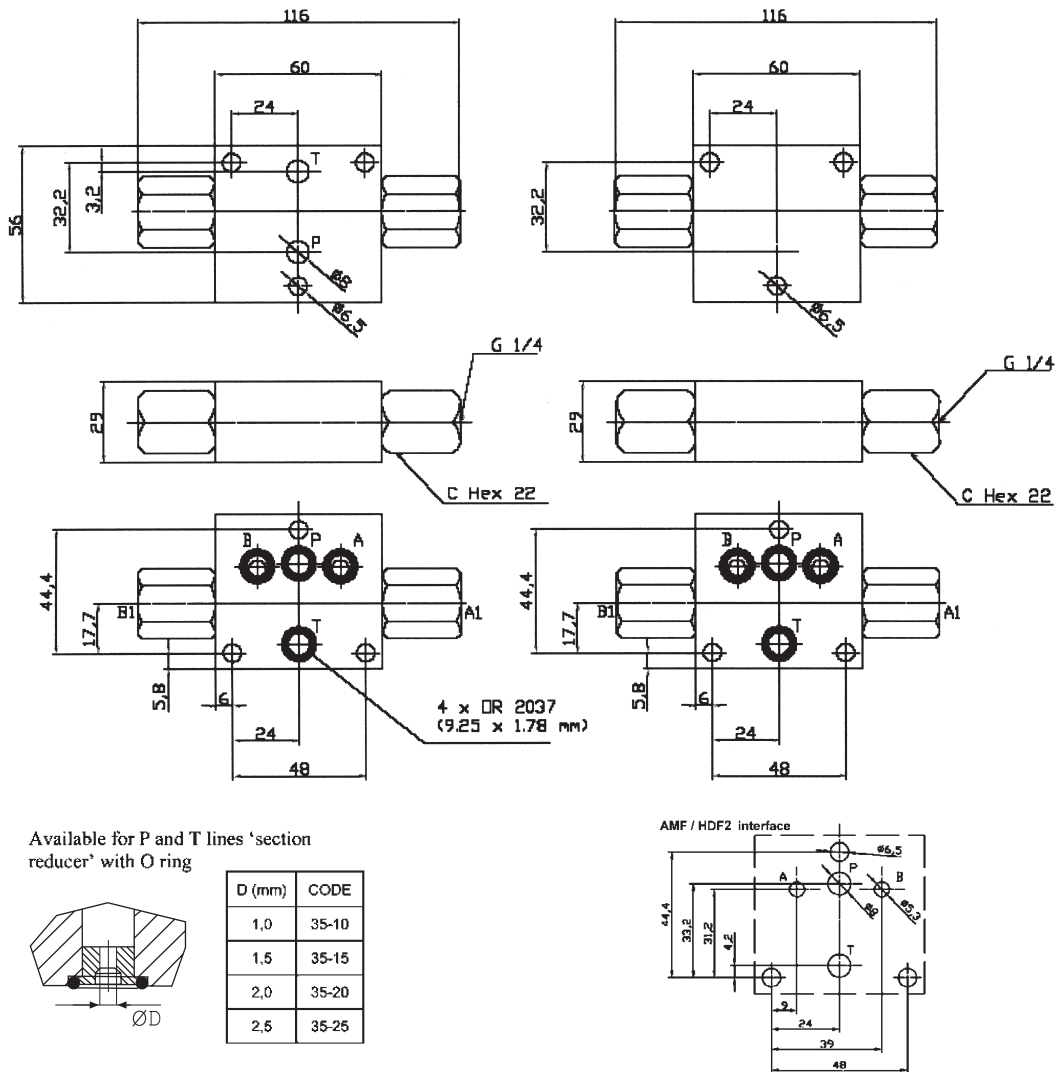


1) A → A1 and B → B1      2) A1 → A and B1 → B      3) Free channels

**OVERALL DIMENSIONS**

**AMF-CP-AB**

**AMFC-CP-AB**



Subject to technical and dimensional changes without notice

**TYPICAL SECTION**

<b>1</b>	Spring	<b>5</b>	Seal
<b>2</b>	Poppet	<b>6</b>	Check device holder
<b>3</b>	Pilot piston	<b>7</b>	Check valve body
<b>4</b>	Main body		

