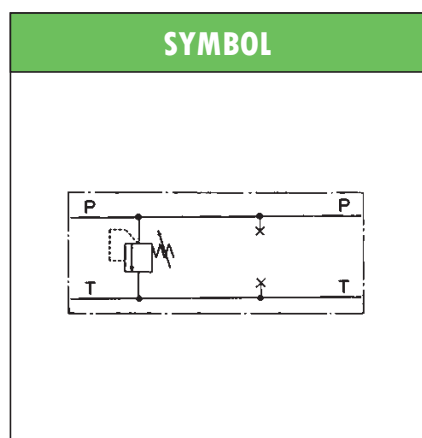
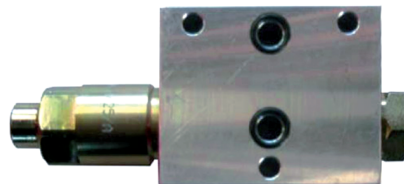


HYDRAULIC COMPACT STACKABLE VALVES type **AMF-MOP** PRESSURE RELIEF – DIRECT ACTING

- Hydraulic pressure relief valves, direct acting
- **AMF / HDF** interface, stackable assembly
- Adjustment by nut
- Max operating pressure : 250 bar
- Max recommended flow: 20 l/min
- Mass: 0,30 kg
- Suitable for mineral oil according to ISO 18/16/14 filtration class or better. Recommended viscosity range: 10 to 60cSt



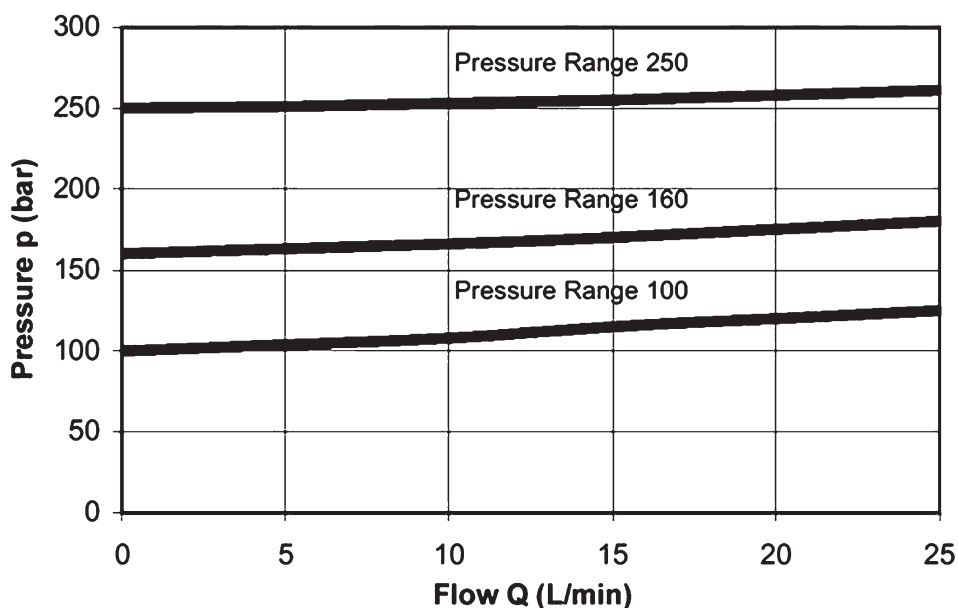
ORDERING CODE

AMF – MOP / 10

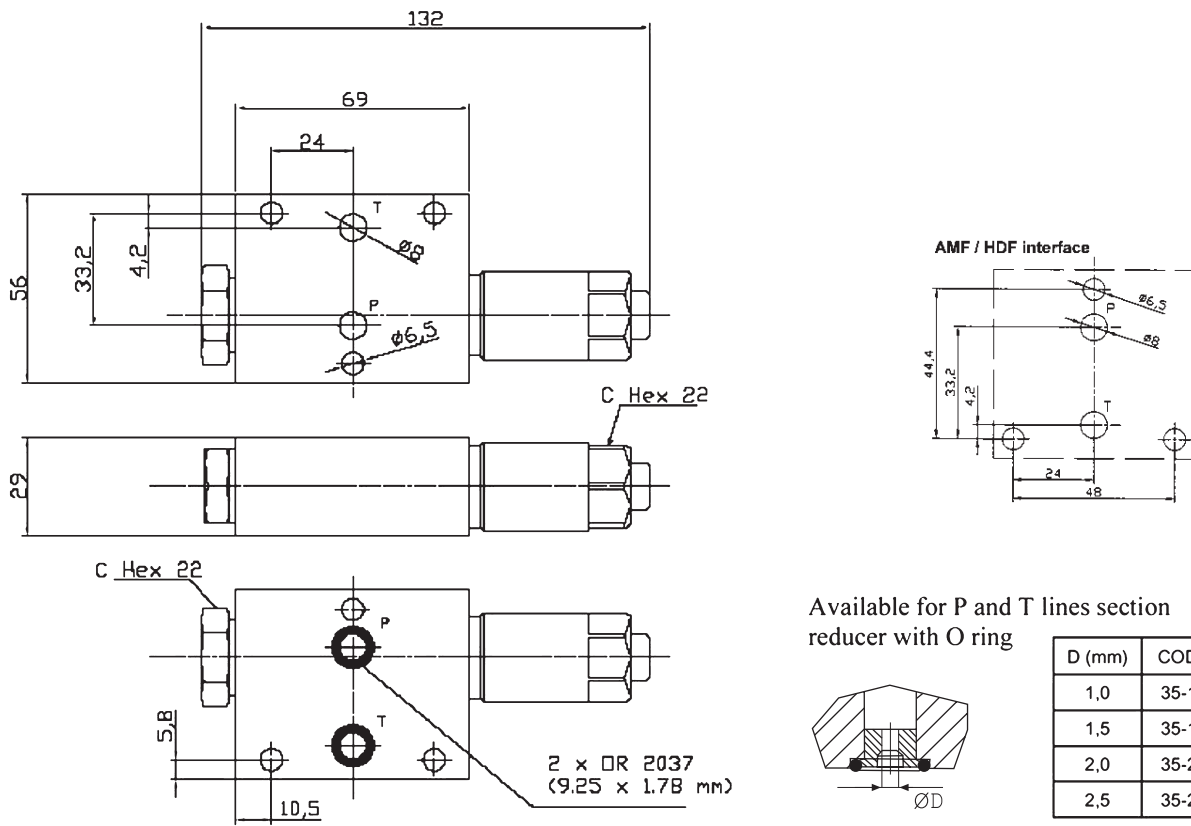
AMF	AMF compact stackable valve
MOP	Pressure relief on P line, direct acting
10	Setting ranges: 10: 32 to 100 bar 16: 63 to 160 bar 25: 100 to 250 bar

TYPICAL DIAGRAM

Typical $\Delta p-Q$ curve diagram for pressure relief valve **AMF-MOP** with mineral oil at 36cSt and 50°C



OVERALL DIMENSIONS



Subject to technical and dimensional changes without notice

TYPICAL SECTION

1	Main body	7	Seal
2	Pressure relief valve body	8	Spring
3	Seal	9	Adjustment nut
4	Piston guide	10	Seal
5	Piston	11	Seal
6	Piston holder	12	Plug

