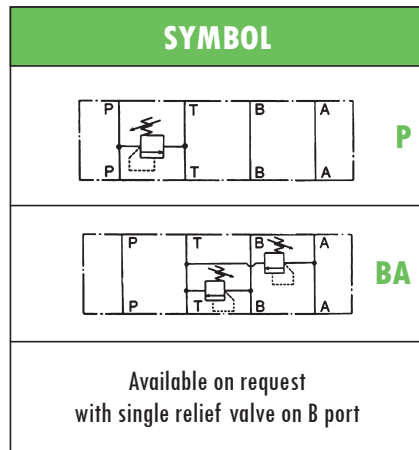


ISO 02 HYDRAULIC STACKABLE VALVES type **AM2-MO** PRESSURE RELIEF – DIRECT ACTING

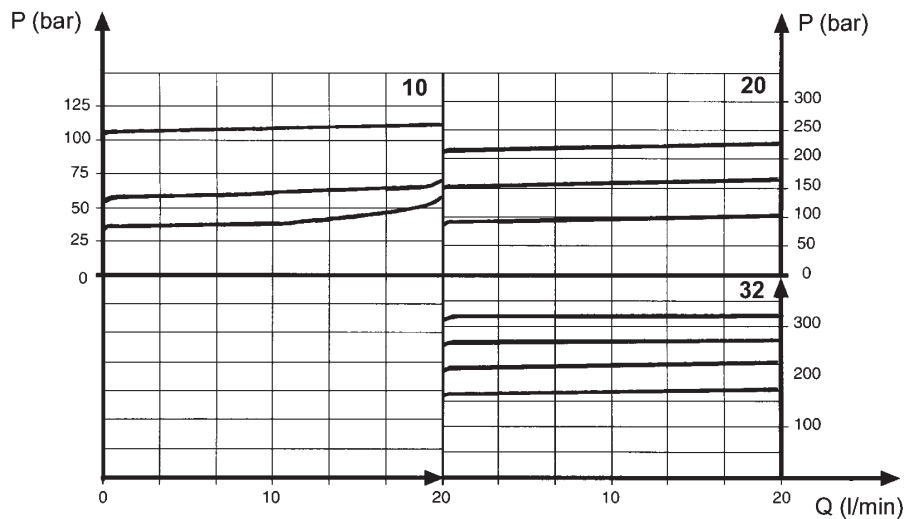
- Hydraulic pressure relief valves, direct acting
- **ISO 02** interface, stackable assembly
- Adjustment by screw with locking nut
- Max operating pressure: 320 bar
- Nominal flow: 20 l/min
- Mass: 0,85kg single valve (1,0 kg dual)
- Suitable for mineral oil according to ISO 18/16/14 filtration class or better.
Recommended viscosity range: 10 to 60cSt



ORDERING CODE	
AM2 – MO – BA / 20	
AM2	ISO 02 stackable valve
MO	Direct acting pressure relief valve
BA	P: Relief on P (see symbol) – A, B free BA: Relief on A and B (see symbol) – P, T free
20	Setting range: 10 = 63 to 125 bar 20 = 80 to 210 bar 32 = 125 to 320 bar

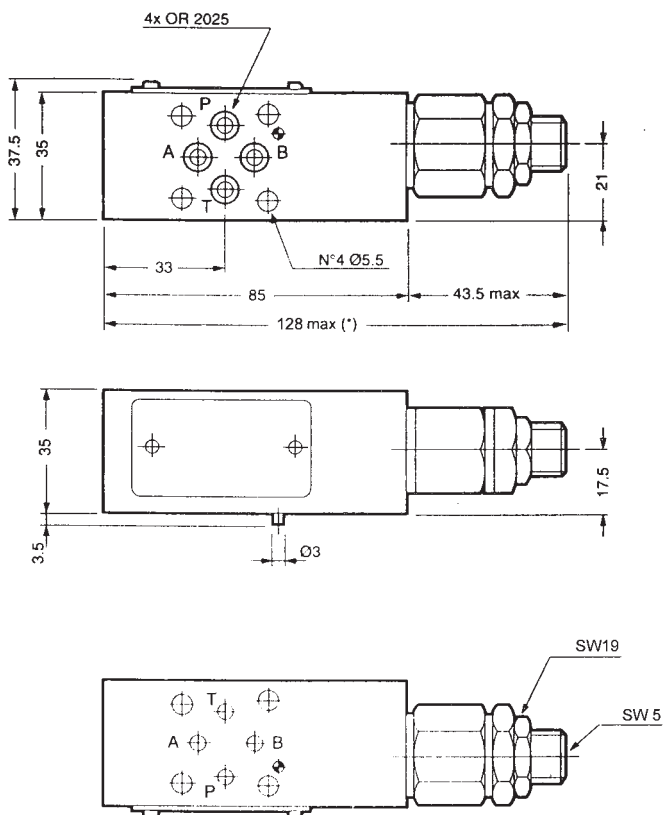
TYPICAL DIAGRAM

Typical $\Delta p-Q$ curves for valves **AM2-MO**, with mineral oil at 36cSt and 50°C with different setting ranges and set relief pressures



10) setting range 63 to 125 bar **20)** setting range 80 to 210 bar **32)** setting range 125 to 320 bar

OVERALL DIMENSIONS



(*) for AM2-MO-BA/20: 180 max

Subject to technical and dimensional changes without notice

TYPICAL SECTION

0	Pin	5	Spring
1	Body	6	Locking nut
2	Seat	7	Seal
3	Poppet	9	Seal
4	Setting screw		

