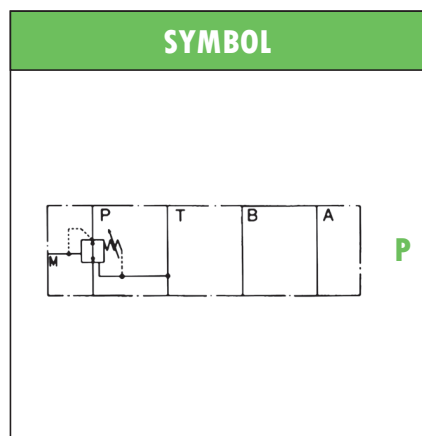


## ISO 02 HYDRAULIC STACKABLE VALVES type **AM2-RO** PRESSURE REDUCING – DIRECT ACTING

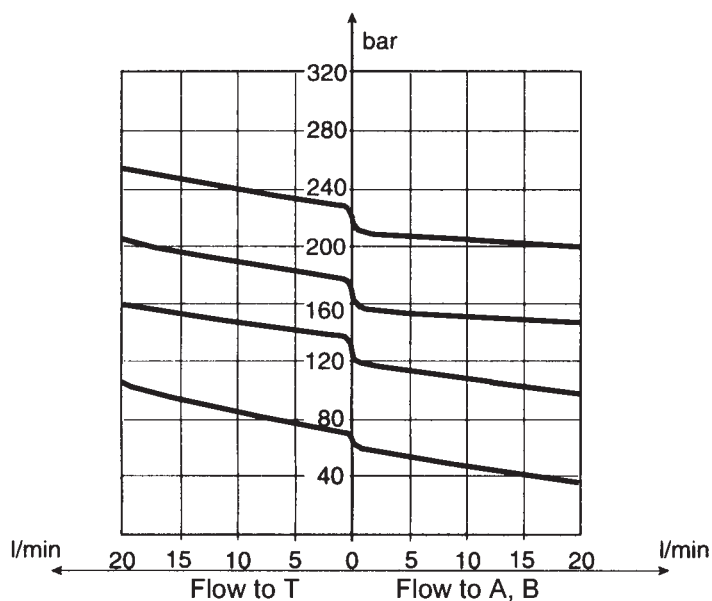
- Hydraulic pressure reducing valves, direct acting
- **ISO 02** interface, stackable assembly
- Adjustment by screw with locking nut
- Max nominal pressure: 320 bar
- Max reduced pressure: 250 bar
- Max recomm. flow: 20 l/min (controlled channels)  
30 l/min (free channels)
- Mass: 0,60kg
- Suitable for mineral oil according to ISO 18/16/14 filtration class or better.  
Recommended viscosity range: 10 to 60cSt



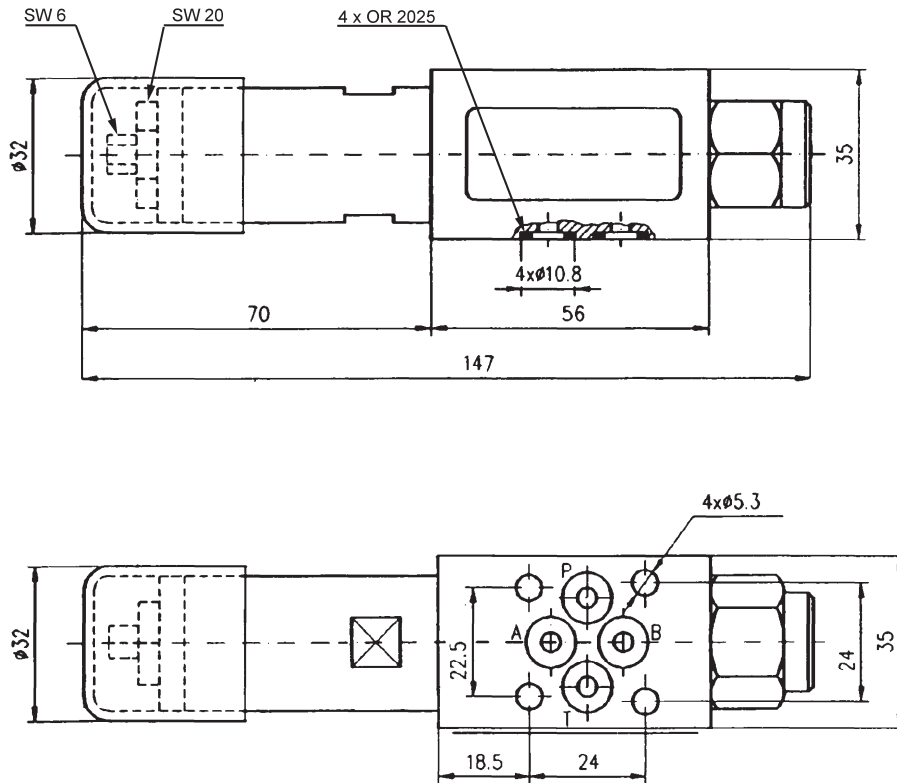
ORDERING CODE	
<b>AM2 – RO – P / 16</b>	
<b>AM2</b>	ISO 02 stackable valve
<b>RO</b>	Direct acting pressure reducing valve
<b>P</b>	Control on P with 3rd way on T line
<b>16</b>	Setting range: <b>6,3</b> = 5 to 80 bar <b>16</b> = 10 to 200 bar <b>20</b> = 25 to 250 bar

### TYPICAL DIAGRAM

Typical  $\Delta p-Q$  curves for valves **AM2-MO**, with mineral oil at 36cSt and 50°C with different setting ranges and set relief pressures



**OVERALL DIMENSIONS**



Subject to technical and dimensional changes without notice

**TYPICAL SECTION**

1	Body	4	Seat and setting screw
2	Throttling spool	5	Plug with 1/4" pressure gauge port
3	Spring	6	Handwheel (On request – add "V" in code)

