

## ISO 02 HYDRAULIC STACKABLE CHECK VALVES type **AM2-CP** PILOT OPERATED

- Hydraulic check valves pilot operated
- **ISO 02** interface, stackable assembly
- Pilot ratio 1: 3,5
- Max operating pressure: 320 bar
- Max recommended flow: 24 l/min
- Mass: 0,75 kg
- Suitable for mineral oil according to ISO 18/16/14 filtration class or better.  
Recommended viscosity range: 10 to 60cSt

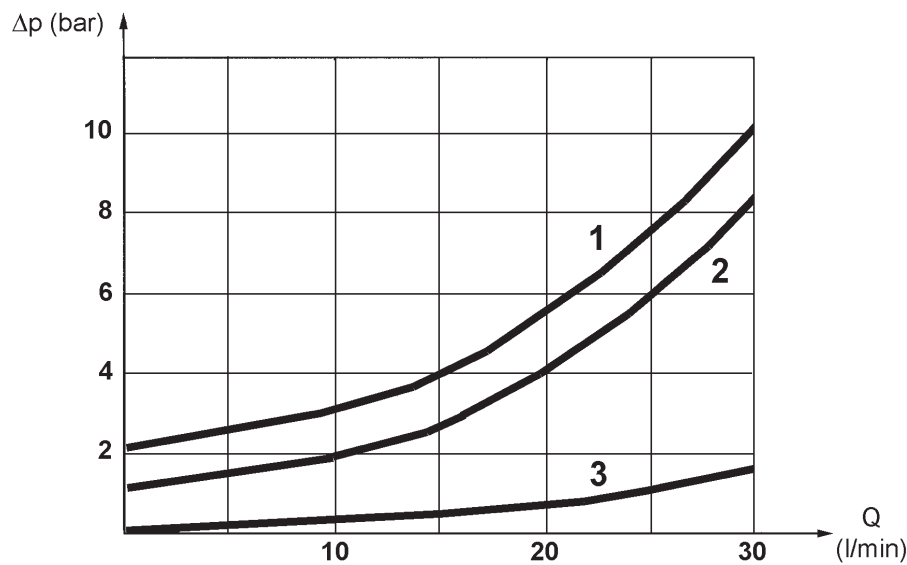


SYMBOL	
Available on request with single pilot operated check on A or on B	

ORDERING CODE	
<b>AM2 – CP – AB</b>	
<b>AM2</b>	ISO 02 stackable valve
<b>CP</b>	Pilot operated check valve
<b>AB</b>	Dual check on A and B ( <b>see symbol</b> ) – P and T free

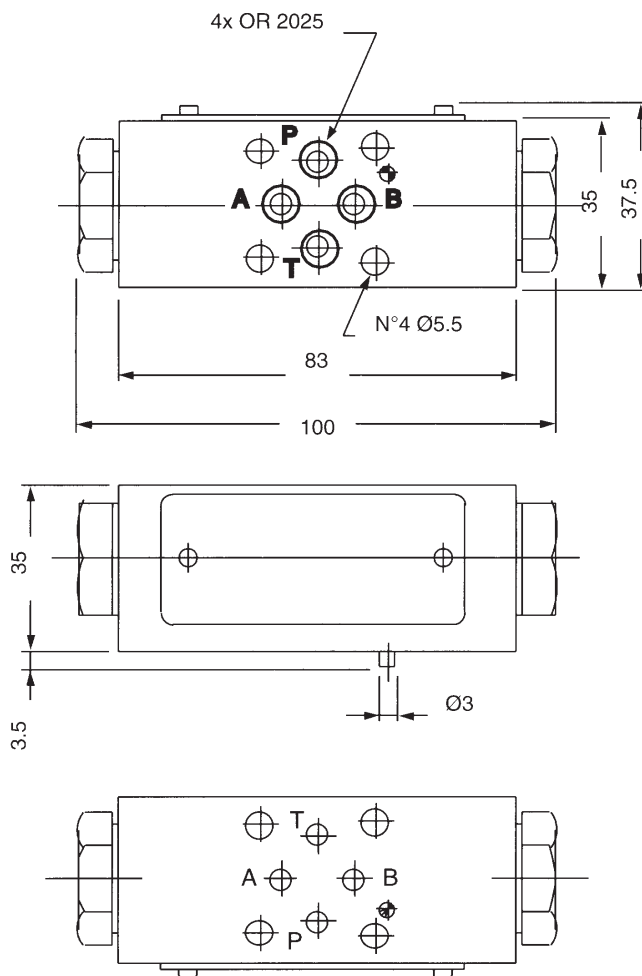
### TYPICAL DIAGRAM

Typical  $\Delta p$ -Q curves for valves **AM2-CP**, with mineral oil at 36cSt and 50°C for flow A1↔A, B1↔B and free channels



1) A→A1 and B→B1    2) A1→A and B1→B    3) Free channels

**OVERALL DIMENSIONS**



Subject to technical and dimensional changes without notice

**TYPICAL SECTION**

<b>1</b>	Body	<b>6</b>	Check device holder
<b>2</b>	Pin	<b>7</b>	Seal
<b>3</b>	Seat	<b>8</b>	Seal
<b>4</b>	Poppet	<b>9</b>	Seal
<b>5</b>	Spring	<b>10</b>	Pilot piston

