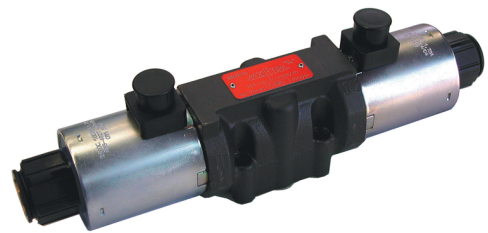


ISO 05 PROPORTIONAL HYDRAULIC VALVES type HD5-PS DIRECTIONAL CONTROL - SOLENOID CONTROLLED

- 4-way directional valves, proportional electric control
- **ISO 05** interface
- Oil immersed solenoids for DC current
- Emergency pin for manual override
- Nominal flow rate: 60 l/min with $\Delta p=10\text{bar}$
- Maximum pressure (port P-A-B): 320bar
- Maximum pressure (port T): 210bar
- Hysteresis $\leq 6\%$
- Suitable for mineral oil according to ISO 16/14/12 filtration class or better.
Recommended viscosity range: 10 to 60cSt



ORDERING CODE	
HD5 – PS – 7PC – R4 / 10	
HD5	ISO 05 4-way directional control valve
PS	Proportional electric control
7PC	Spool type and drive arrangement
R4	24 VDC proportional solenoid - $R(20^\circ\text{C})=13,9 \Omega$ — $I_{MAX}=1,1\text{A}$ - The solenoid must be energized by an electronic driver capable of full control of min and max current value. We recommend UED-M15 type (see table ED-M15)
10	Drawing

SPOOL TYPE			
1PML		3PC	
1PC		7PC	

TYPICAL DIAGRAM	
<p>Flow characteristics in relation to exciting current for valves HD5-PS in standard configuration, with mineral oil at 35cSt and 50°C with $\Delta p=10\text{bar}$</p> <p>The coil current which initialise the flow through the proportional directional valve can differ with a tolerance range of $\pm 6\%$</p>	<p>Typical p-Q curves of operating limits for HD5-PS valves at different solenoid current values, with mineral oil at 35cSt and 50°C</p> <p>1) 40% solenoid current value 2) 60% solenoid current value 3) 80% solenoid current value 4) 100% solenoid current value</p>

