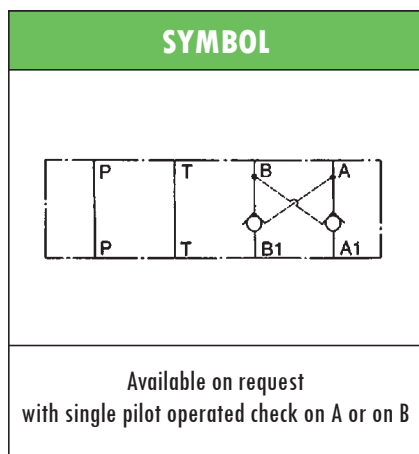
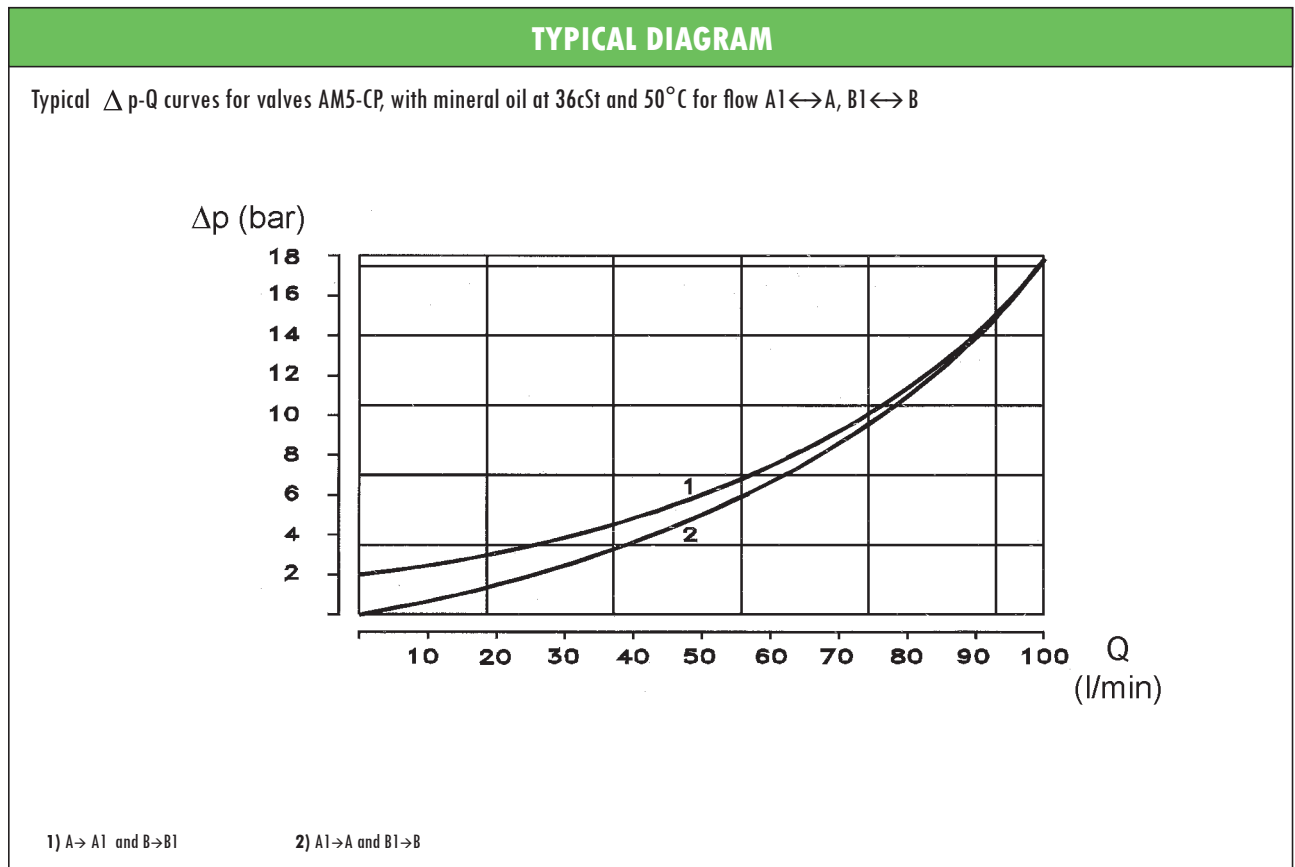


ISO 05 HYDRAULIC STACKABLE CHECK VALVES type **AM5-CP** PILOT OPERATED

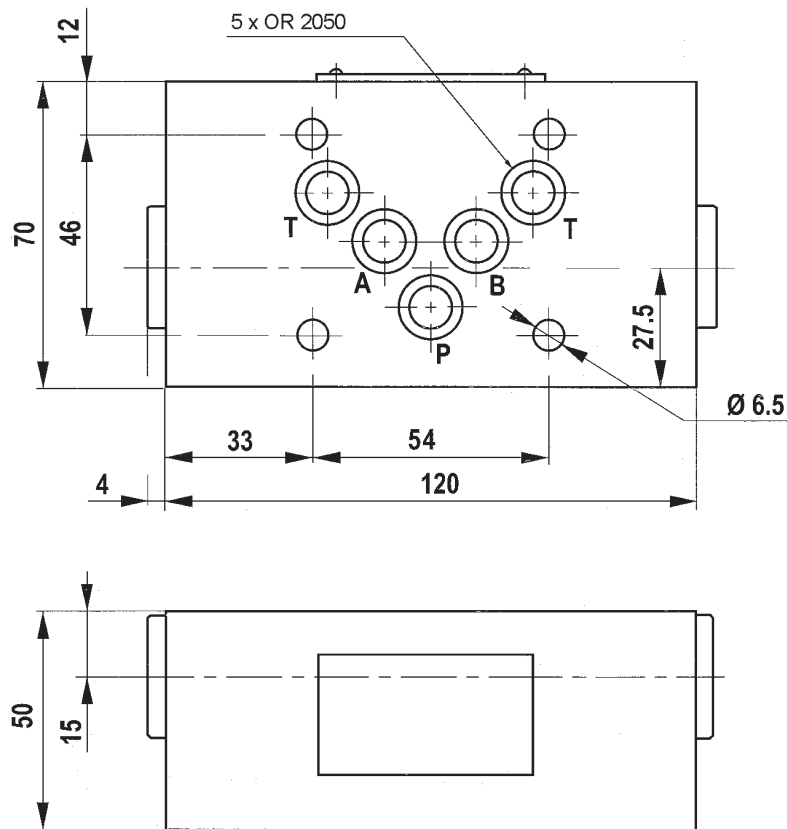
- Hydraulic check valves pilot operated
- **ISO 05** interface, stackable assembly
- Pilot ratio 1 : 5,6
- Decompression feature
- Max operating pressure : 320 bar
- Max recommended flow: 100 l/min
- Mass: 2,9 kg
- Suitable for mineral oil according to ISO 18/16/14 filtration class or better.
Recommended viscosity range: 10 to 60cSt



| ORDERING CODE | |
|----------------------|---|
| AM5 – CP – AB | |
| AM5 | ISO 05 stackable valve |
| CP | Pilot operated check valve |
| AB | Dual check on A and B (see symbol) – P and |
| | |



OVERALL DIMENSIONS



Subject to technical and dimensional changes without notice

TYPICAL SECTION

| | | | |
|----------|--------------|----------|----------------------|
| 1 | Body | 4 | Decompression poppet |
| 2 | Pilot piston | 5 | Spring |
| 3 | Main poppet | 6 | Seal |

