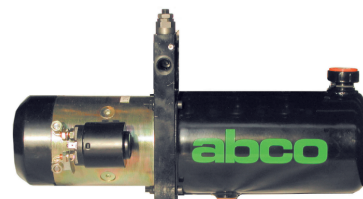


## MINI POWER PACKS type SCLA Drawing 10 DC ELECTRIC MOTOR

- Mini hydraulic power packs with weight and overall dimensions really limited. Suitable for small power installations, when is required lightness, compact dimensions, easy assembly and high reliability.
- Operating pressure up to 200bar
- DC electric motor: 1,6kW or 2,2kW
- Designed for direct assembly of the new compact stackable valves AMF/HDF\* (tables AD-220 to AD-270)



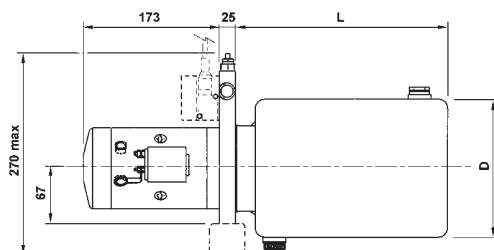
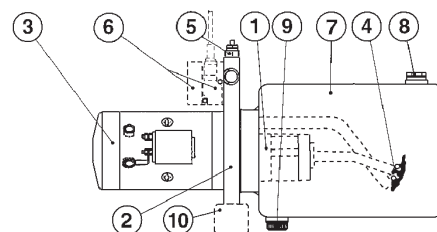
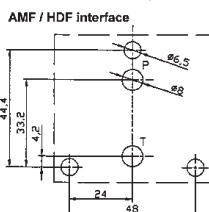
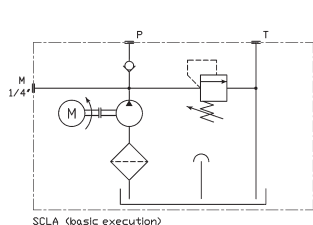
RESERVOIR	
02	2,5 L
05	5 l
08	8 l

GEAR PUMP	
11	1,1 cm <sup>3</sup> /rev
16	1,6 cm <sup>3</sup> /rev
27	2,7 cm <sup>3</sup> /rev
42	4,2 cm <sup>3</sup> /rev
58	5,8 cm <sup>3</sup> /rev

ORDERING CODE	
<b>SCLA-02-S-11-1216 / 10</b>	
<b>SCLA</b>	Series
<b>02</b>	Reservoir (see table)
<b>S</b>	Valve ports on main body: S = only on motor side D = on both sides (on request, available only with 02 reservoir)
<b>11</b>	Gear pump (see table)
<b>1216</b>	DC motor: 1216 = 12V DC – 1,6kW 2422 = 24V DC – 2,2kW
<b>10</b>	Drawing

### HYDRAULIC SCHEME, PARTS LIST and DIMENSIONS

<b>1</b>	Gear pump	<b>6</b>	Hand pump + starting block (options, see next page)
<b>2</b>	Main body	<b>7</b>	Reservoir
<b>3</b>	DC electric motor, with starter	<b>8</b>	Filler cap with breather (1/2")
<b>4</b>	Strainer (60 micron)	<b>9</b>	Drain plug (1/2")
<b>5</b>	Pressure relief valve	<b>10</b>	Foot mounting (on request, code PSC)

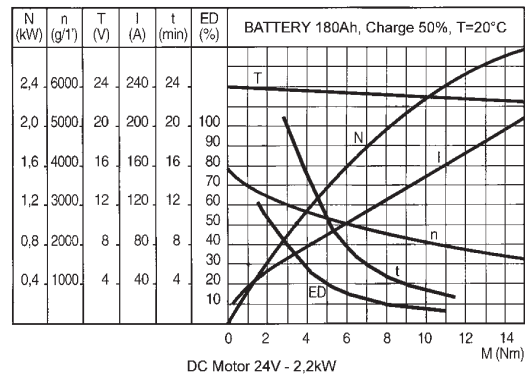
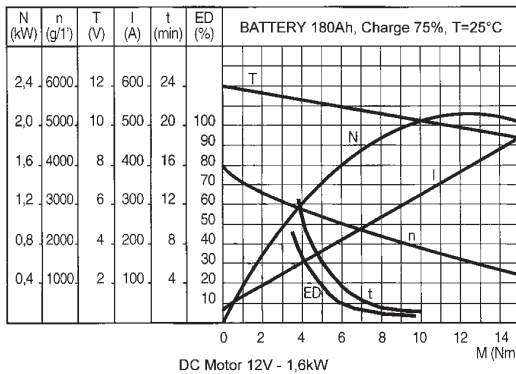
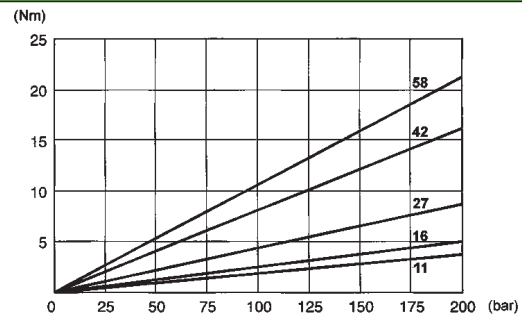


Reservoir	D	L
02	128	235
05	174	295
08	190	285

Subject to technical and dimensional changes without notice

### DIMENSIONING DIAGRAMS

- Find in the diagram on the right the torque (Nm) needed to pump shaft at the required pressure
- According to the required torque, for each motor type, in below report diagrams is possible to find power N (kW), rotational speed n (rpm), voltage T (V), current I (A), maximum operating full load time t (min), duty cycle ED (%).

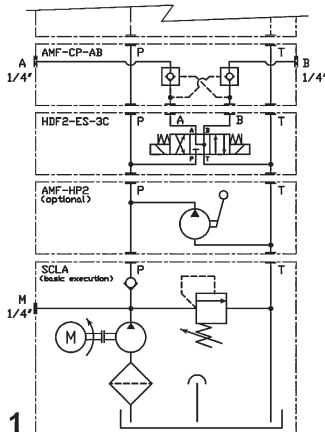


Required torque (Nm) for pump acting, depending on needed pressure (bar)

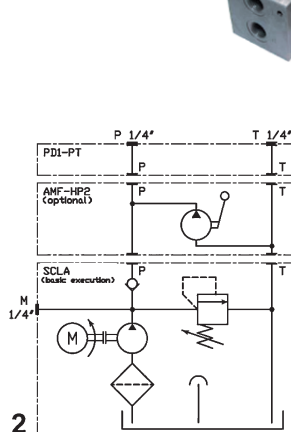
### STARTING BLOCK OPTIONS



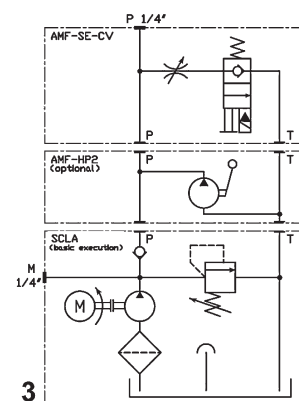
Direct assembly of HDF\* electrovalves and AMF modules (see tab. AD-220 to AD-270)



PD1-PT starting plate with P-T 1/4" BSP for general purpose hydraulic power.



AMF-SE starting plate for simple acting of cylinders (see below all the variants available)



On request, before each block or valves, can be included the stackable hand pump AMF-HP2 with 2cm<sup>3</sup>/stroke (see table AA-400)



AMF-SE starting plates for simple acting of cylinders:

Each variant includes one solenoid operated valve type EVC.34.04 (see tab. AC-100)

#### Different flow regulator variants for AMF-SE modules

AMF-SE-CV.**	1  2	Throttle adjustable
AMF-SE-Q1.**	1  2	Fixed flow 1 l/min, pressure compensated
AMF-SE-Q2.**		Fixed flow 2 l/min, pressure compensated
AMF-SE-Q4.**		Fixed flow 4 l/min, pressure compensated
AMF-SE-QV.**	1  2	Throttle adjustable, pressure compensated

\*\* solenoid valve voltage: 12=12V DC, 24=24V DC