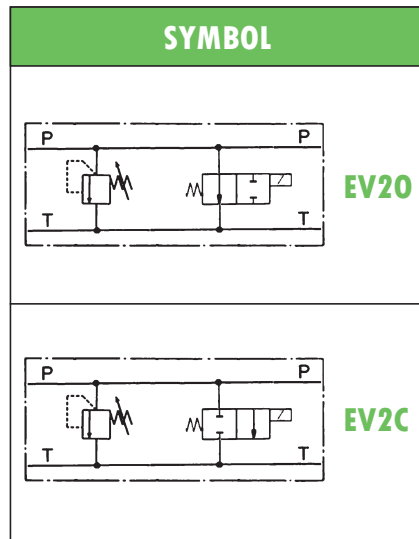
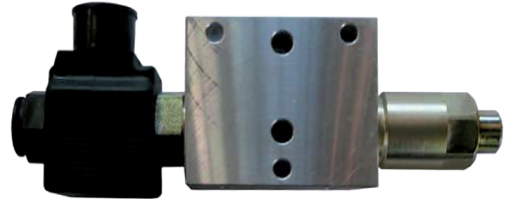
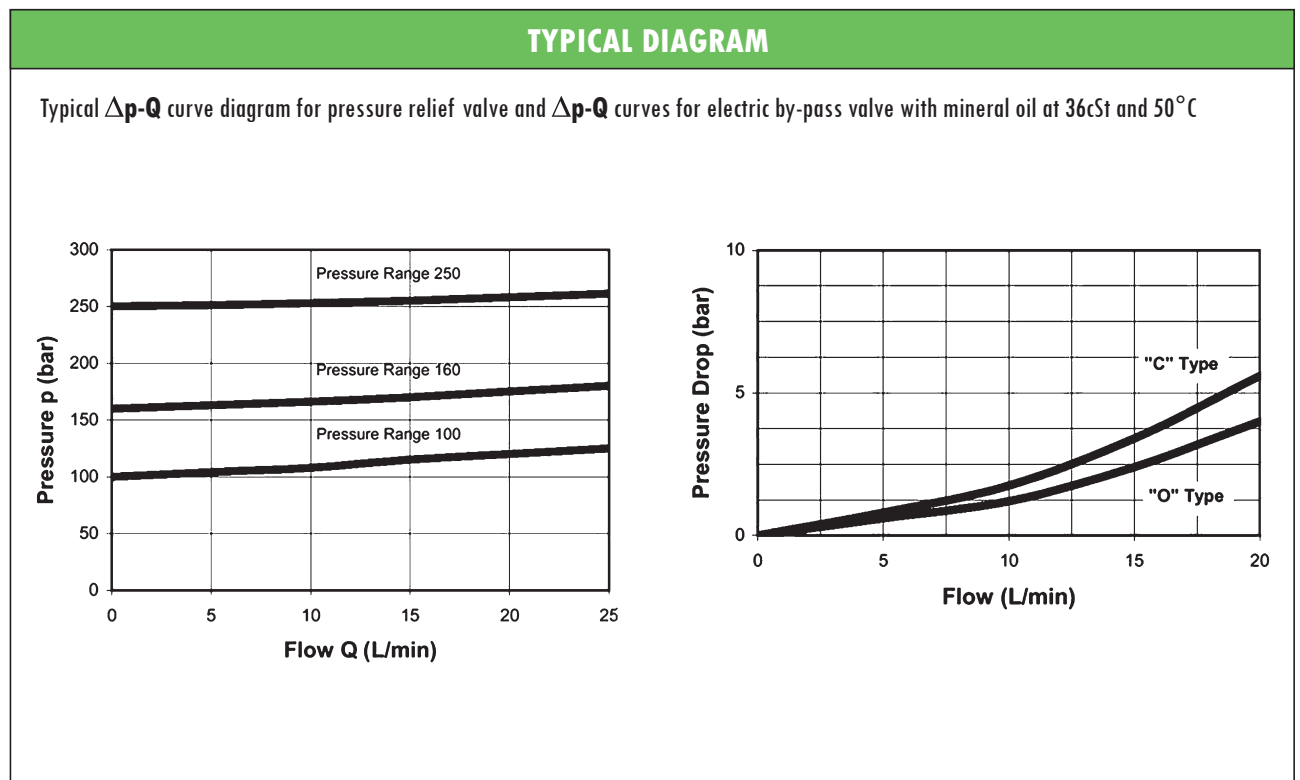


HYDRAULIC COMPACT STACKABLE MODULE **AMF-MOP-EV** ELECTRIC BY-PASS / PRESSURE CONTROL

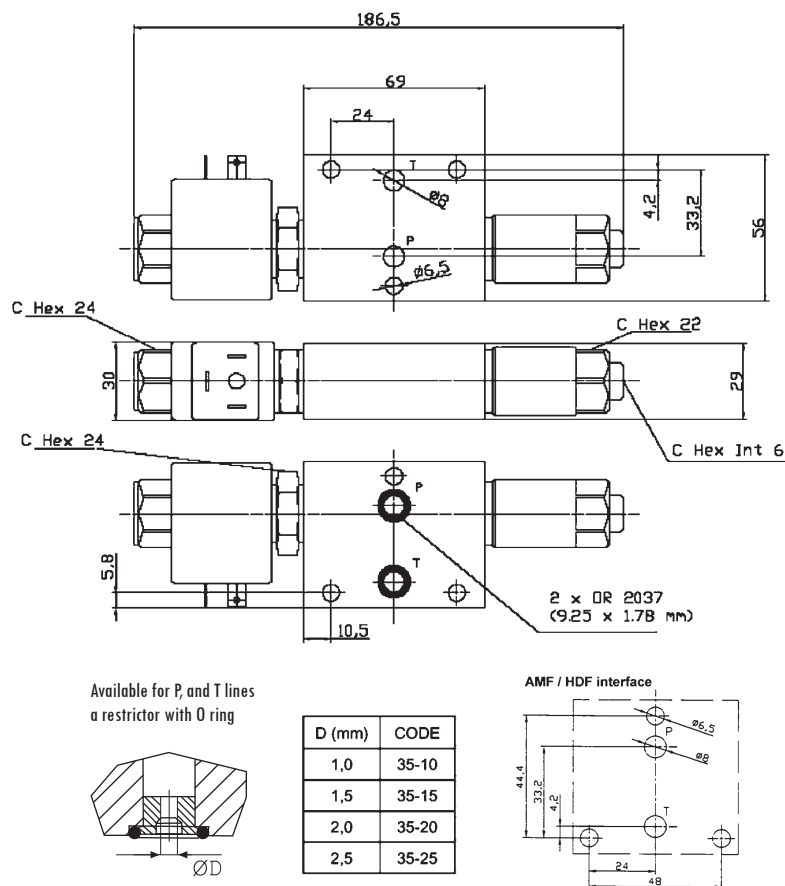
- Hydraulic valve module for pressure control and venting function, by standard 2-way solenoid operated valve and pressure relief valve.
- AMF / HDF** interface, stackable assembly
- Max operating pressure: 250 bar
- Max recommended flow: 20 l/min
- Mass: 0,70 kg
- Suitable for mineral oil according to ISO 18/16/14 filtration class or better.
Recommended viscosity range: 10 to 60cSt



ORDERING CODE	
AMF – MOP/* – EV20 – 012C	
AMF	AMF compact stackable valve
MOP/*	Pressure relief on P line – (*) setting range (10 =32 to 100bar – 16 =63 to 160bar – 25 =100 to 250 bar)
EV20	2-way solenoid operated valve for by-pass: EV20 = normally open (see symbol) EV2C = normally closed (see symbol)
012C	Standard coil voltage: 012C = 12V DC 024C = 24V DC (available on request 220V AC)



OVERALL DIMENSIONS



Subject to technical and dimensional changes without notice

TYPICAL SECTION

1	Main body	10	Ring nut
2	Pressure relief valve body	11	Solenoid
3	Seal	12	Coil
4	Piston guide	13	Spring
5	Piston	14	Cartridge
6	Piston holder	15	Seal
7	Seal	16	Valve body
8	Spring	17	Spool
9	Adjustment nut	18	Seal

