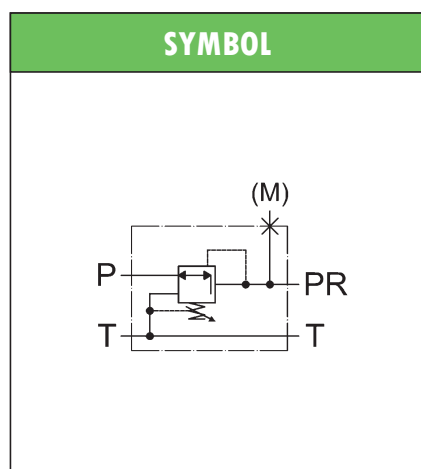
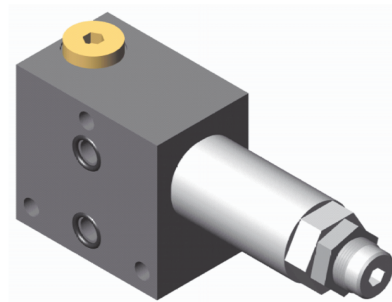


## HYDRAULIC COMPACT STACKABLE VALVES type **AMF-RO** PRESSURE REDUCING - DIRECT ACTING

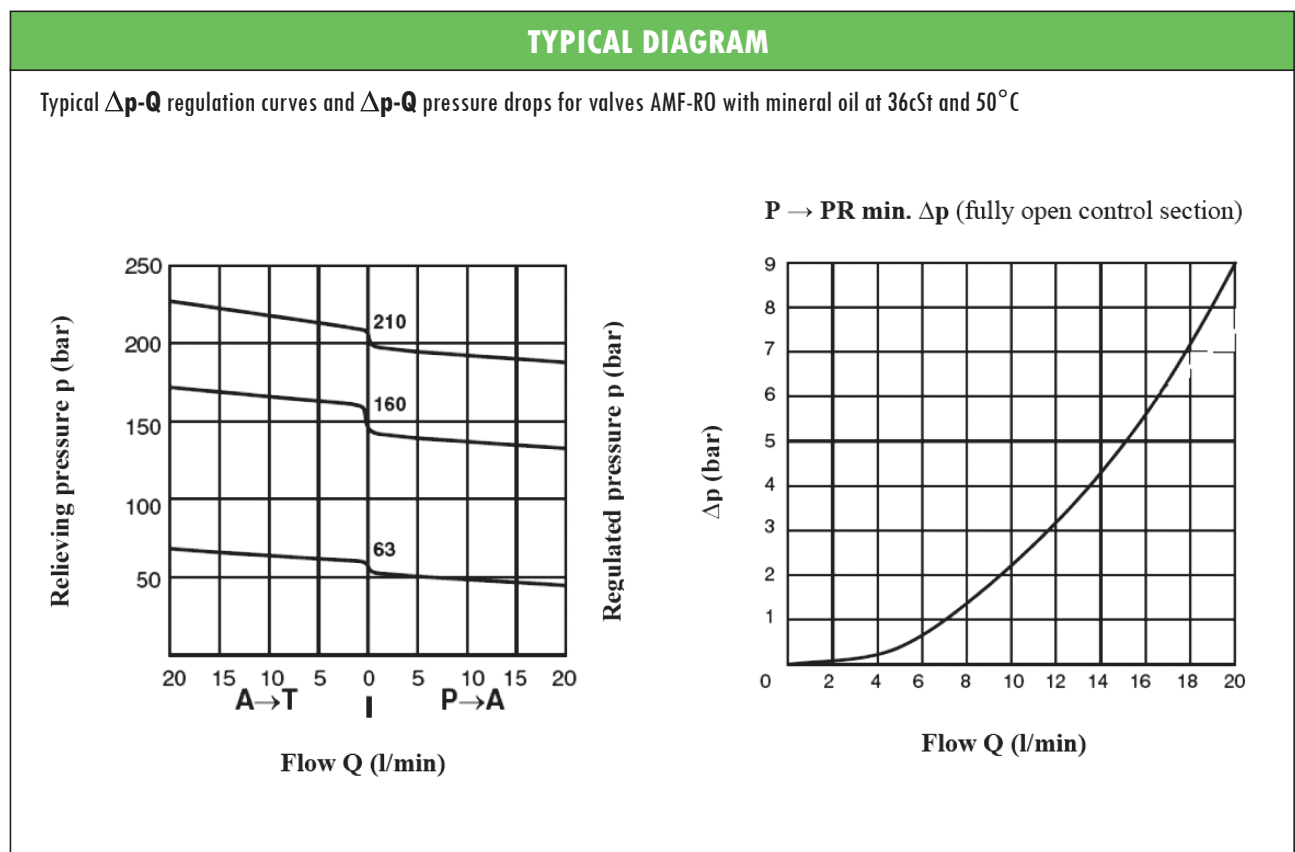
- Hydraulic pressure reducing valves, direct acting.
- **AMF / HDF** interface, stackable assembly
- Adjustment by screw with locking nut
- Max nominal pressure: 250 bar
- Max reduced pressure: 210 bar
- Max recommended flow: 20 l/min
- Mass: 0,50 kg
- Suitable for mineral oil according to ISO 18/16/14 filtration class or better. Recommended viscosity range: 10 to 60cSt



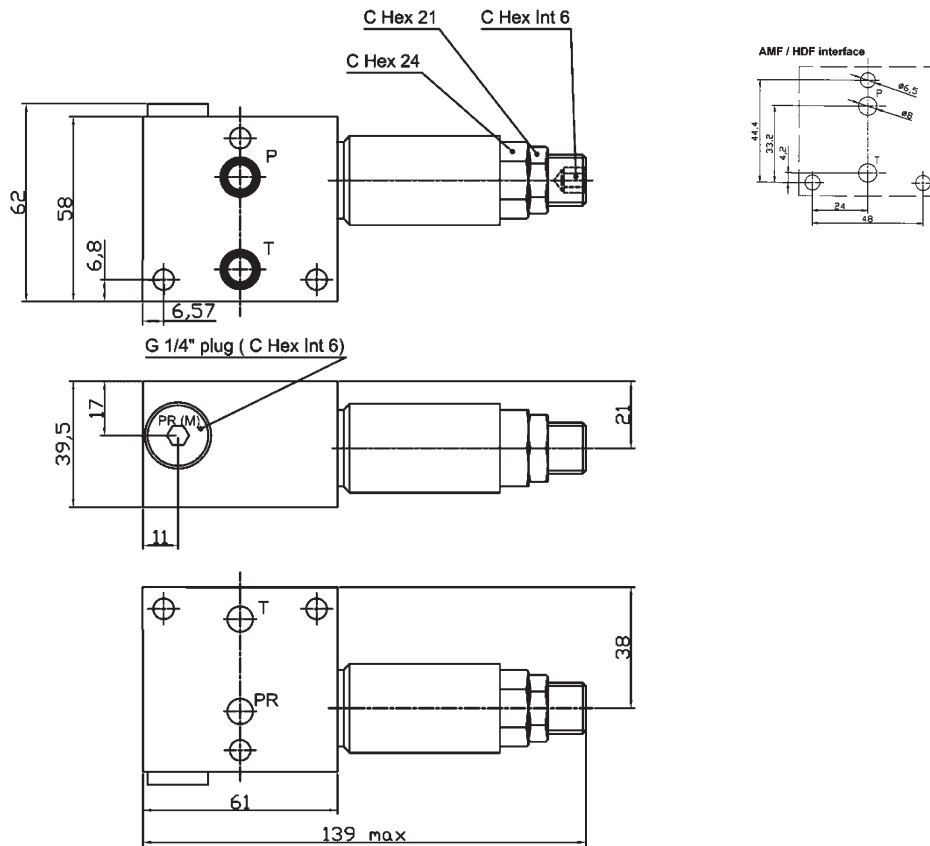
**ORDERING CODE**

**AMF – RO – P/6,3**

<b>AMF</b>	AMF compact stackable valve
<b>RO</b>	Direct operating pressure reducing
<b>P</b>	Control on P, 3rd way on T line
<b>6,3</b>	Setting range: <b>6,3</b> = 16 to 63 bar <b>16</b> = 40 to 160 bar <b>20</b> = 50 to 210 bar



**OVERALL DIMENSIONS**



Subject to technical and dimensional changes without notice

**TYPICAL SECTION**

<b>1</b>	Main body	<b>8</b>	Seal
<b>2</b>	plug (M port 1/4" BSP)	<b>9</b>	Reducing valve holder
<b>3</b>	Seal	<b>10</b>	Spring holder
<b>4</b>	Reducing valve body	<b>11</b>	Spring
<b>5</b>	Seal	<b>12</b>	Spring holder seal
<b>6</b>	Throttling spool	<b>13</b>	Seal
<b>7</b>	Seal	<b>14</b>	Setting screw

