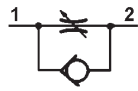

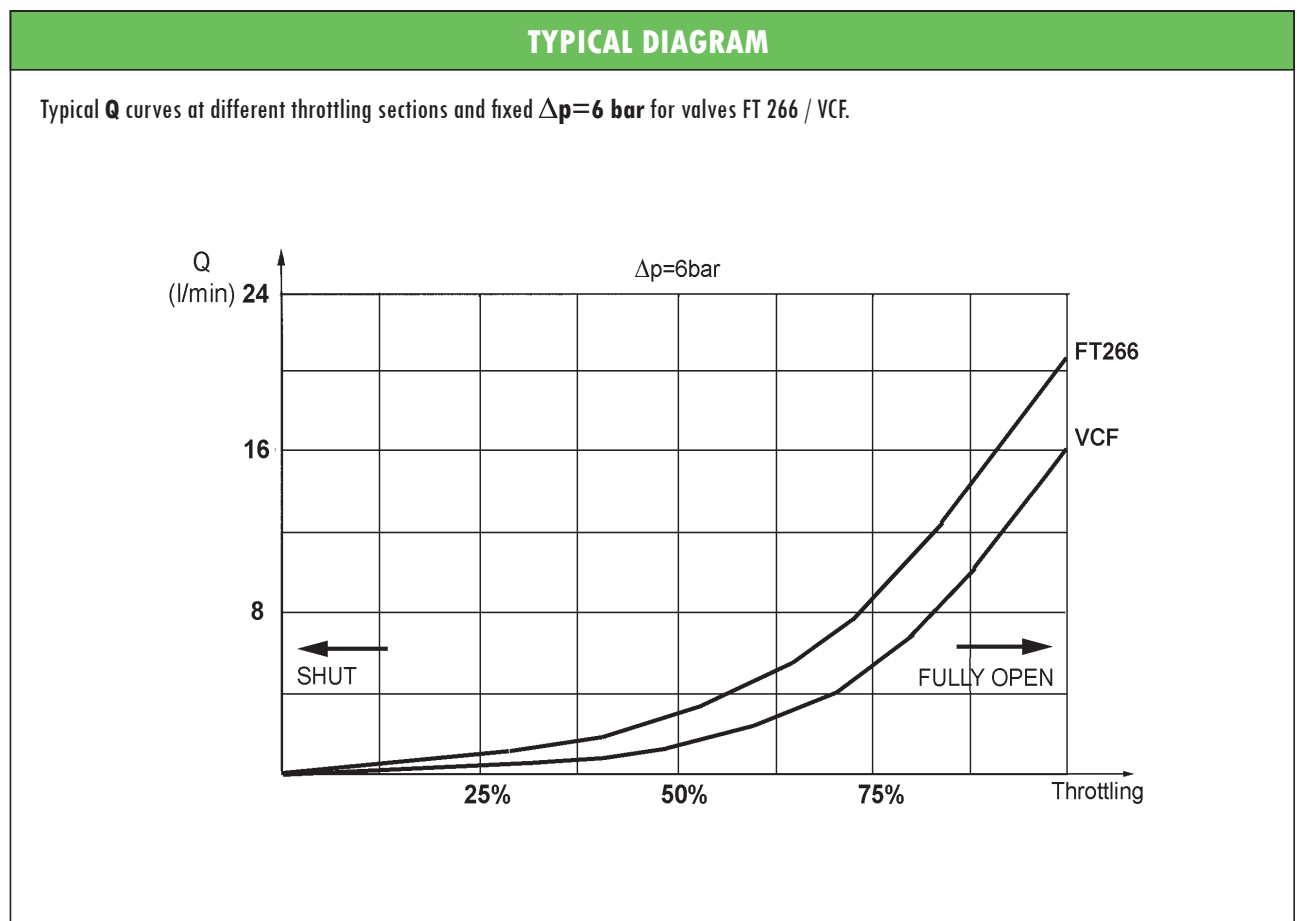


HYDRAULIC SCREW-IN FLOW CONTROL VALVES type **FT266 / VCF** NOT COMPENSATED - ADJUSTABLE

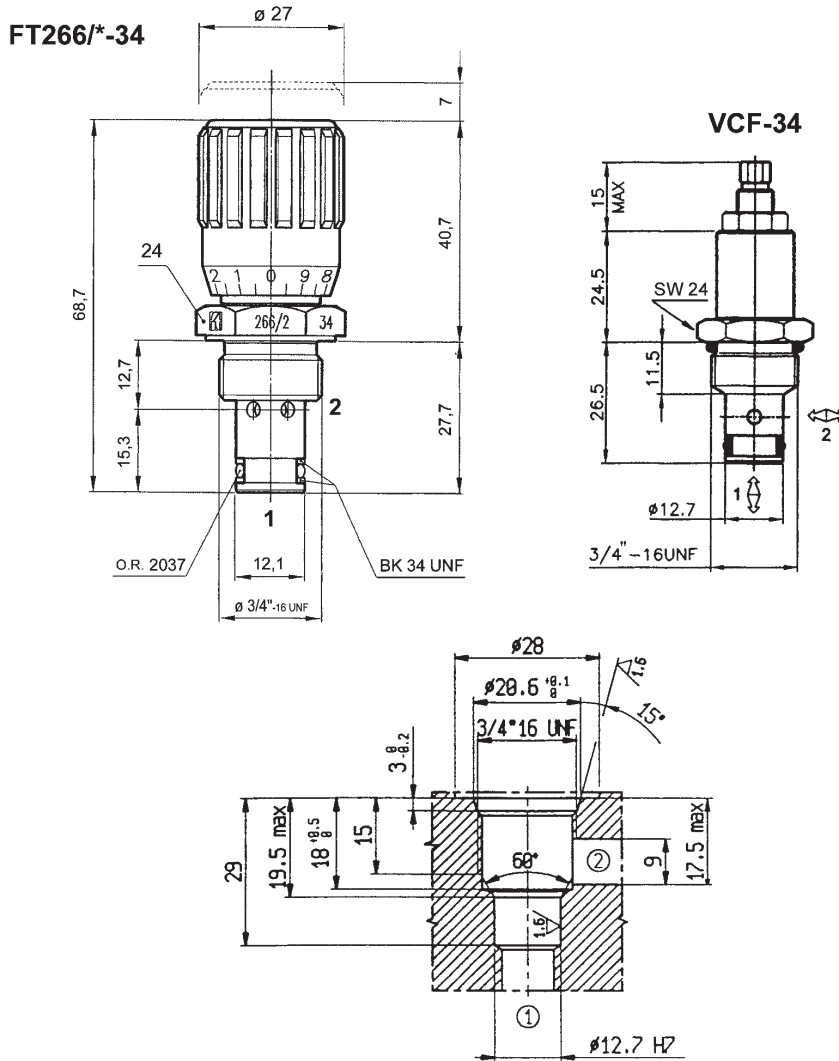
- Throttle adjustable valves
- Suitable for standard cavity **3/4" 16 UNF**
- 1 or 2-way flow, not compensated
- Maximum operating pressure: **250 bar**
- High adjustment accuracy due to its precision hand-grip with locking screw (FT types)
- Steel body
- Needle in hardened and grinded steel



TECHNICAL DATA					
ORDERING CODE	SYMBOL	Q _{MAX} [l/min]	P _{MAX} [bar]	CAVITY	MASS [kg]
FT 266/5-34		20	250	3/4" 16 UNF	0,15
FT 266/2-34					0,13
VCF-34		16			0,12

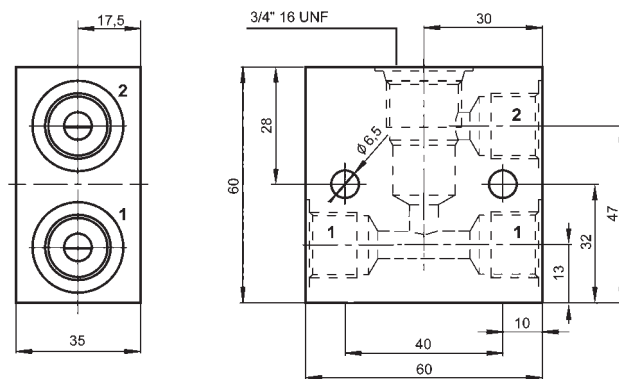


OVERALL DIMENSIONS



Subject to technical and dimensional changes without notice

LINE ASSEMBLY BODY



Code	Ports
LAB-34-2/14	1/4" BSP
LAB-34-2/38	3/8" BSP
Mass: 0,25 kg	

Suitable for standard 2-way screw-in valves, cavity 3/4" 16 UNF.
 Designed for in-line assembly, either parallel or in series one, LAB aluminium bodies are supplied with one service port (1) plugged.