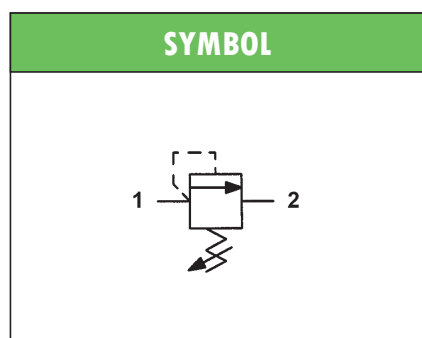


## HYDRAULIC SCREW-IN PRESSURE RELIEF VALVES type MO-010 DIRECT ACTING

- Suitable for standard cavity **3/4" 16 UNF**
- 2-way direct acting relief valves, poppet type
- Wide setting range: 25 to 250 bar
- Maximum operating pressure: 250 bar
- Maximum recommended flow: 16 l/min
- External parts zinc plated
- Steel body
- Poppet in hardened and grinded steel
- Mass 0,14 kg



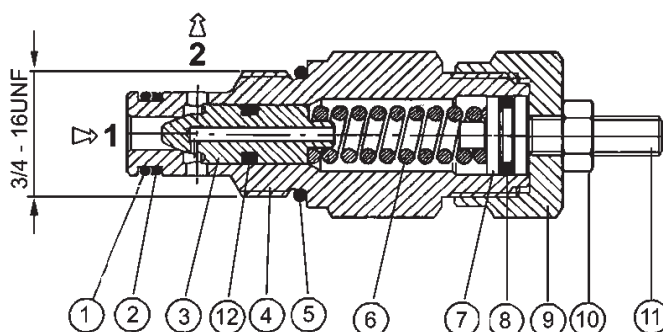
**ORDERING CODE**

**MO – 010/20**

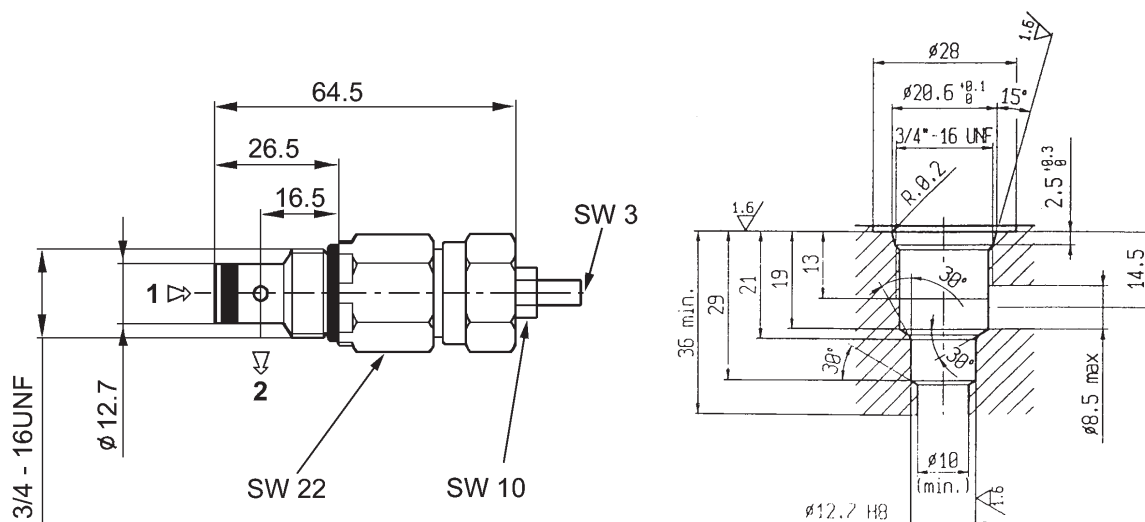
<b>MO</b>	Direct acting relief valve
<b>010</b>	Nominal size (3/4" 16 UNF)
<b>20</b>	Spring type (setting range 25 to 250 bar)

**TYPICAL SECTION**

<b>1</b>	Seal	<b>7</b>	Spring plate
<b>2</b>	Seal	<b>8</b>	Seal
<b>3</b>	Poppet	<b>9</b>	Adjustment holder
<b>4</b>	Body	<b>10</b>	Locking nut
<b>5</b>	Seal	<b>11</b>	Adjustment screw
<b>6</b>	Spring	<b>12</b>	Seal



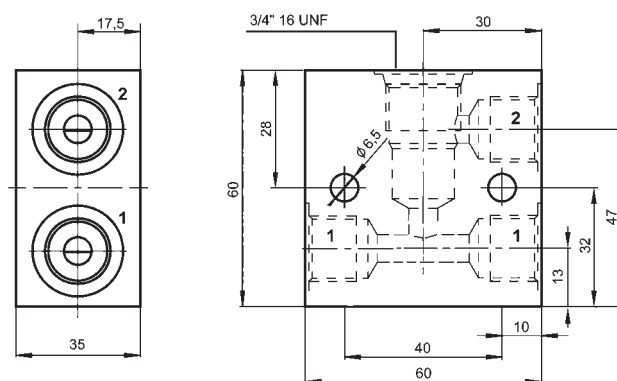
**OVERALL DIMENSIONS**



SPARE PARTS		
Position	Description	
1	O-Ring	Ø 16,36 x 2,20 70 Sh
2	Teflon Ring	Ø 9,7 x 12,7 x 1,4
3	O-Ring	Ø 9,25 x 1,78 70 Sh

Subject to technical and dimensional changes without notice

**LINE ASSEMBLY BODY**



Code	Ports
LAB-34-2/14	1/4" BSP
LAB-34-2/38	3/8" BSP
Mass: 0,25 kg	

Suitable for standard 2-way screw-in valves, cavity 3/4" 16 UNF.  
 Designed for in-line assembly, either parallel or in series one, LAB aluminium bodies are supplied with one service port (1) plugged.