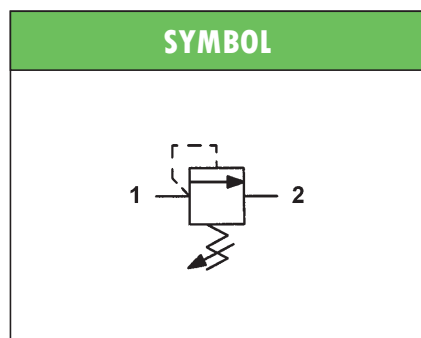
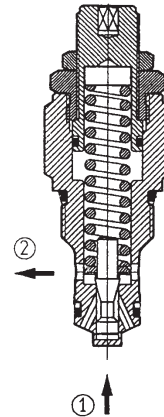


HYDRAULIC SCREW-IN PRESSURE RELIEF VALVES type MO-020 DIRECT ACTING

- Suitable for standard cavity 3/4" 16 UNF
- 2-way direct acting relief valves, poppet type
- Fast response and low hysteresis in shutting
- Maximum operating pressure: 350 bar
- Maximum flow rate: 25 l/min
- External parts zinc plated
- Steel body
- Poppet in hardened and grinded steel
- Mass 0,13 kg



ORDERING CODE

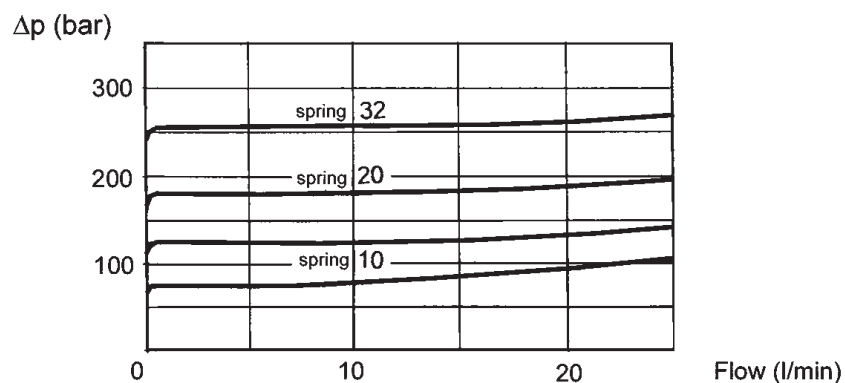
MO – 020/32

MO	Direct acting relief valve
020	Nominal size (3/4" 16 UNF)
32	Spring type (see table)

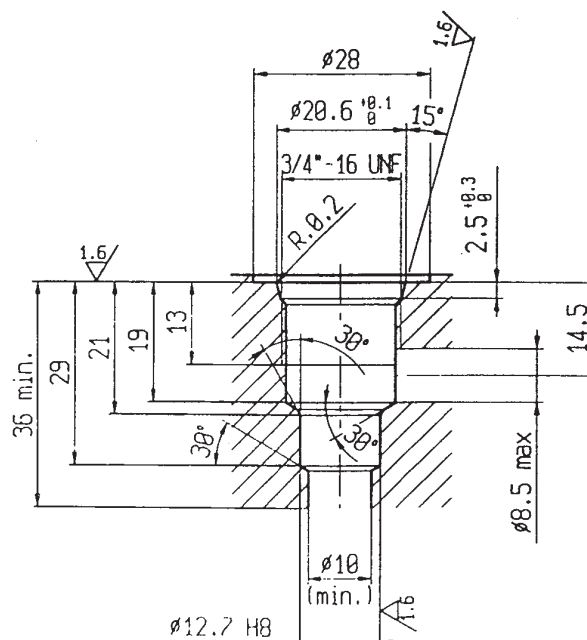
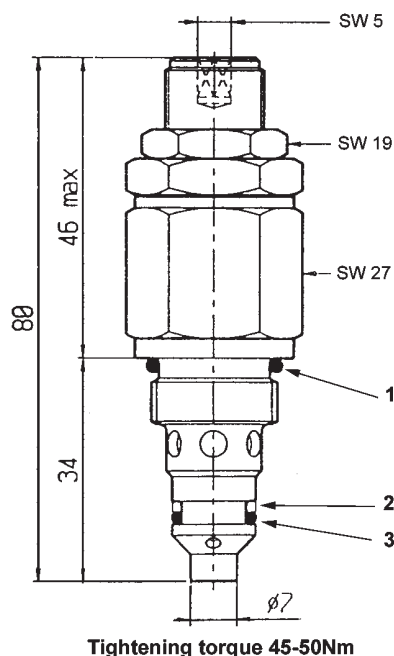
SPRING	SETTING [bar]	INCREASE [bar/turn]
10	32 to 125	15
20	63 to 200	30
32	125 to 350	40

TYPICAL DIAGRAM

After final test the valves are respectively set to 100, 180 and 350 bar ($\pm 10\%$) with 5 l/min flow rate.



OVERALL DIMENSIONS

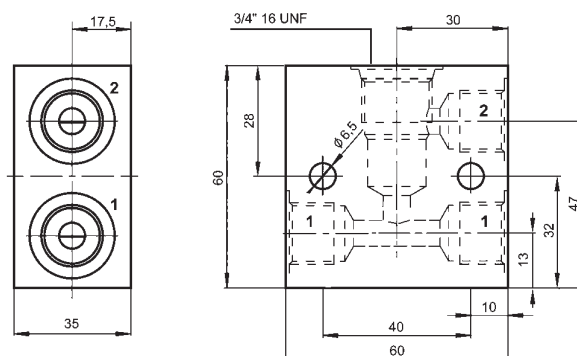


SPARE PARTS

Position	Description
1	O-Ring Ø 16,36 x 2,20 70 Sh
2	Teflon Ring Ø 9,7 x 12,7 x 1,4
3	O-Ring Ø 9,25 x 1,78 70 Sh

Subject to technical and dimensional changes without notice

LINE ASSEMBLY BODY



Code	Ports
LAB-34-2/14	1/4" BSP
LAB-34-2/38	3/8" BSP
Mass: 0,25 kg	

Suitable for standard 2-way screw-in valves, cavity 3/4" 16 UNF.

Designed for in-line assembly, either parallel or in series one, LAB aluminium bodies are supplied with one service port (1) plugged.