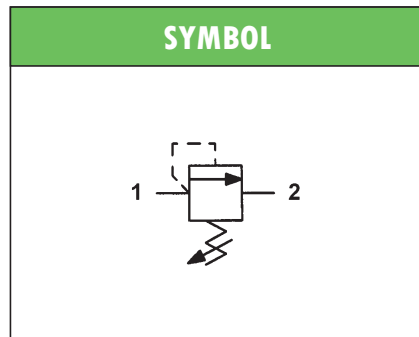
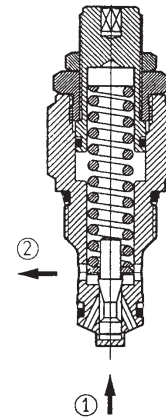


HYDRAULIC SCREW-IN PRESSURE RELIEF VALVES type MO-4 DIRECT ACTING

- Suitable for standard cavity **7/8" 14 UNF**
- 2-way direct acting relief valves, poppet type
- Fast response and low hysteresis in shutting
- Maximum operating pressure: 350 bar
- Maximum flow rate: 50 l/min
- External parts zinc plated
- Steel body
- Poppet in hardened and grinded steel
- Mass 0,13 kg



ORDERING CODE

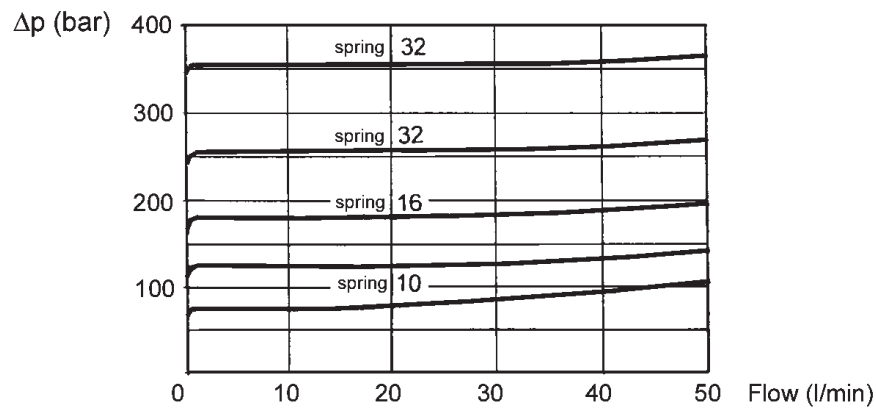
MO – 4/16

MO	Direct acting relief valve
4	Nominal size (7/8" 14 UNF)
16	Spring type (see table)

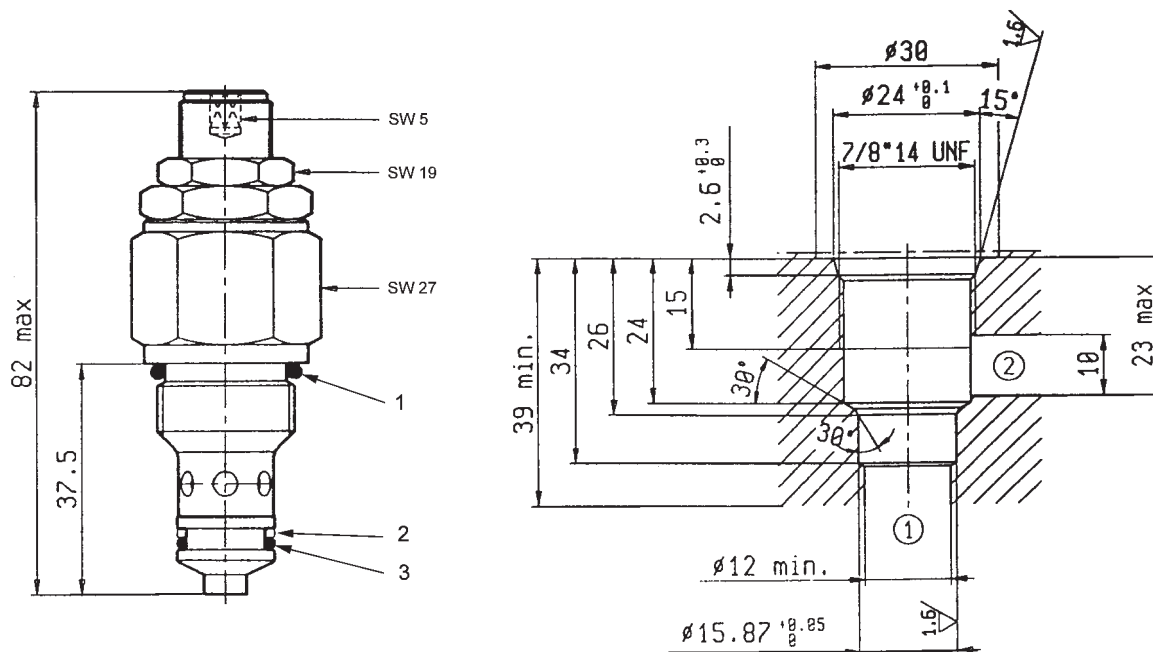
SPRING	SETTING [bar]	INCREASE [bar/turn]
10	20 to 130	16,5
16	40 to 180	16,5
32	60 to 350	51

TYPICAL DIAGRAM

After final test the valves are respectively set to 100, 180 and 350 bar ($\pm 10\%$) with 5 l/min flow rate.



OVERALL DIMENSIONS

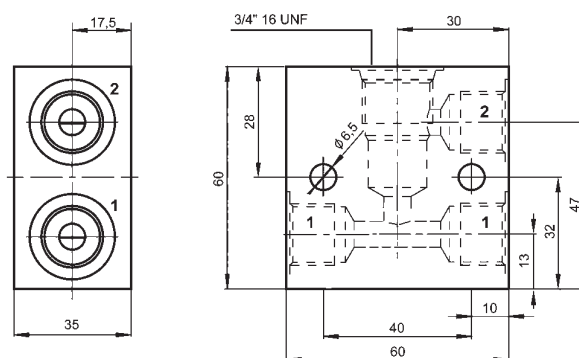


SPARE PARTS

Position	Description
1	O-Ring $\phi 19,18 \times 2,46$ 70 Sh
2	Teflon Ring $\phi 12,8 \times 15,86 \times 1,4$
3	O-Ring $\phi 12,42 \times 1,78$ 70 Sh

Subject to technical and dimensional changes without notice

LINE ASSEMBLY BODY



Code	Ports
LAB-78-2/38	3/8" BSP
LAB-78-2/12	1/2" BSP
Mass: 0,37 kg	

Suitable for standard 2-way screw-in valves, cavity $7/8" 14 \text{ UNF}$.

Designed for in-line assembly, either parallel or in series one, LAB aluminium bodies are supplied with one service port (1) plugged.