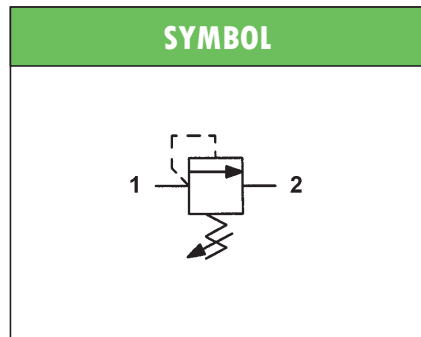
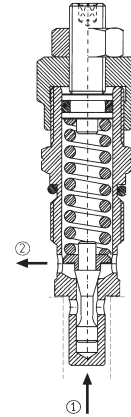


## HYDRAULIC SCREW-IN PRESSURE RELIEF VALVES type MO-3 DIRECT ACTING

- Suitable for cavity M20 (VS 30)
- 2-way direct acting relief valves, poppet type
- Fast response and low hysteresis in shutting
- Maximum operating pressure: 320 bar
- Maximum flow rate: 40 l/min
- External parts burnished
- Steel body
- Poppet in hardened and grinded steel
- Mass 0,17 kg

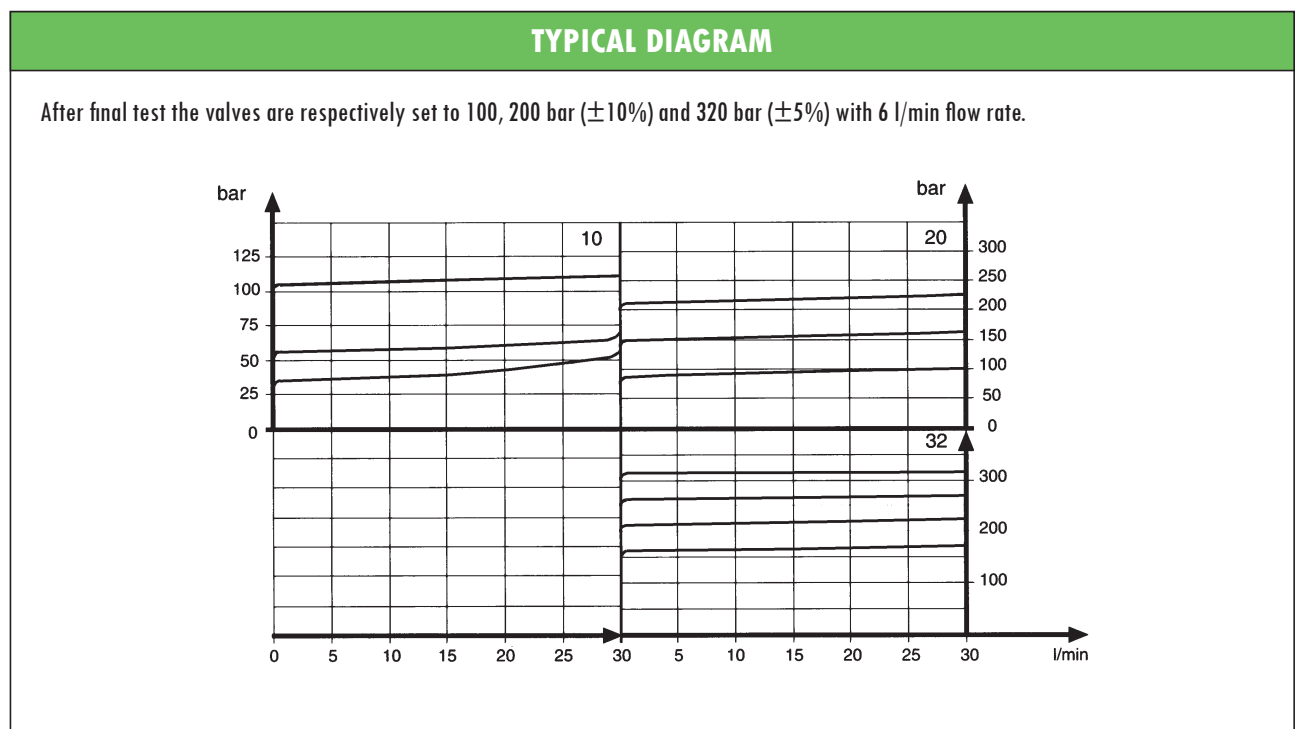


**ORDERING CODE**

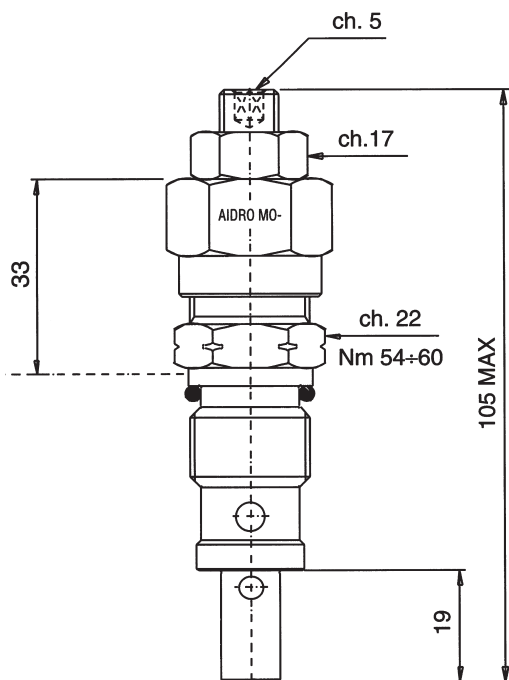
**MO – 3/20**

<b>MO</b>	Direct acting relief valve
<b>3</b>	Nominal size (M20 – VS 30)
<b>20</b>	Spring type (see table)

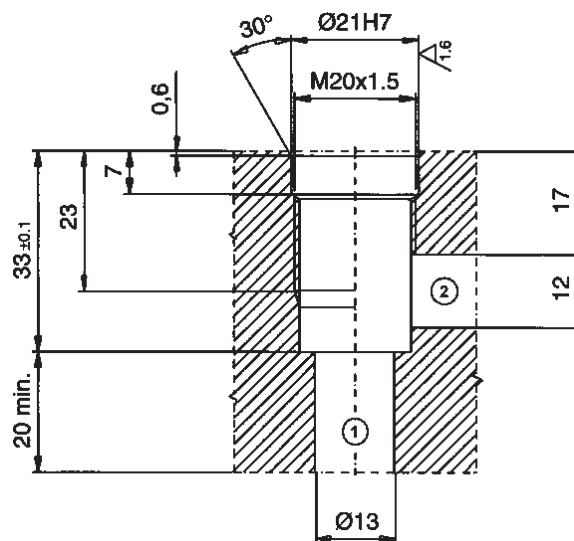
<b>SPRING</b>	<b>SETTING [bar]</b>	<b>INCREASE [bar/turn]</b>
<b>10</b>	25 to 125	25 to 125
<b>20</b>	40 to 250	40 to 250
<b>32</b>	100 to 320	100 to 320



**OVERALL DIMENSIONS**



Tightening torque 60Nm



**SPARE PARTS**

Position	Code	Description
1	OR 121	O-Ring Ø 15,88 x 2,62 70 Sh

Subject to technical and dimensional changes without notice

**LINE ASSEMBLY BODY**

Non-Standard. Available on request.