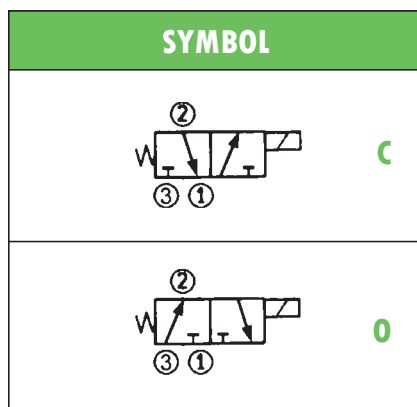


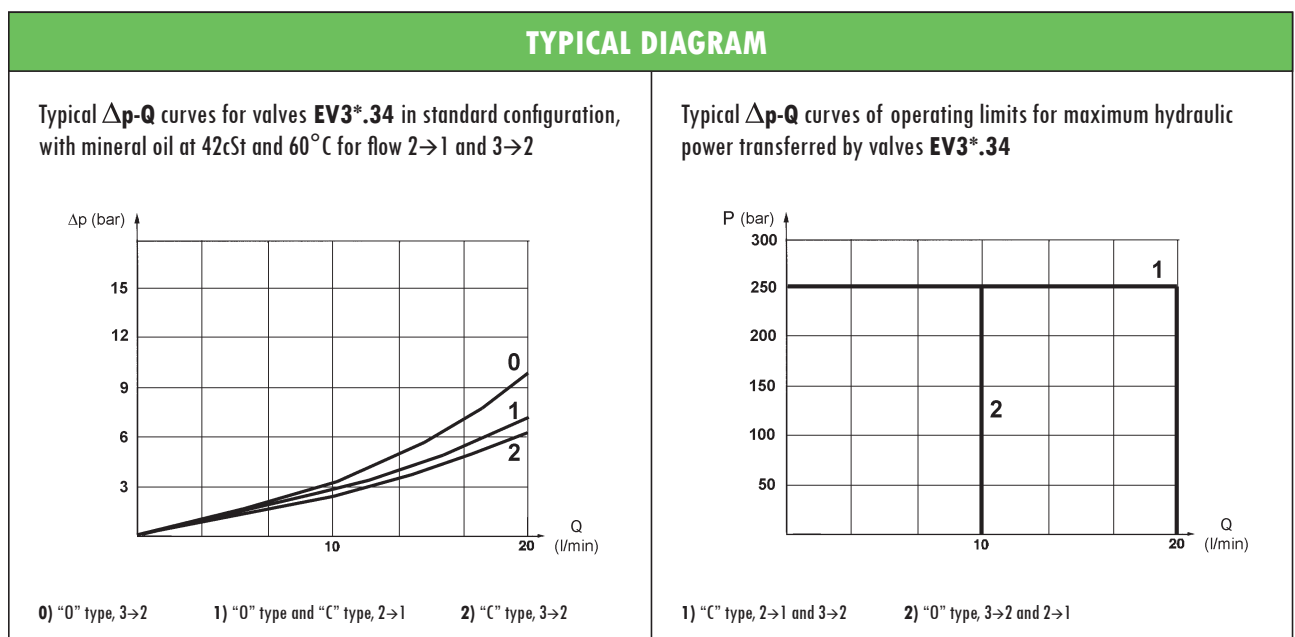
## HYDRAULIC SCREW-IN SPOOL VALVES type EV3\*.34 3-WAY SOLENOID OPERATED

- Suitable for standard cavity 3/4" 16 UNF
- Maximum operating pressure: 250 bar
- Maximum recommended flow rate: 20 l/min
- 100% duty cycle
- Steel body
- Spool in hardened and grinded steel
- Mass 0,37 kg (coil included)

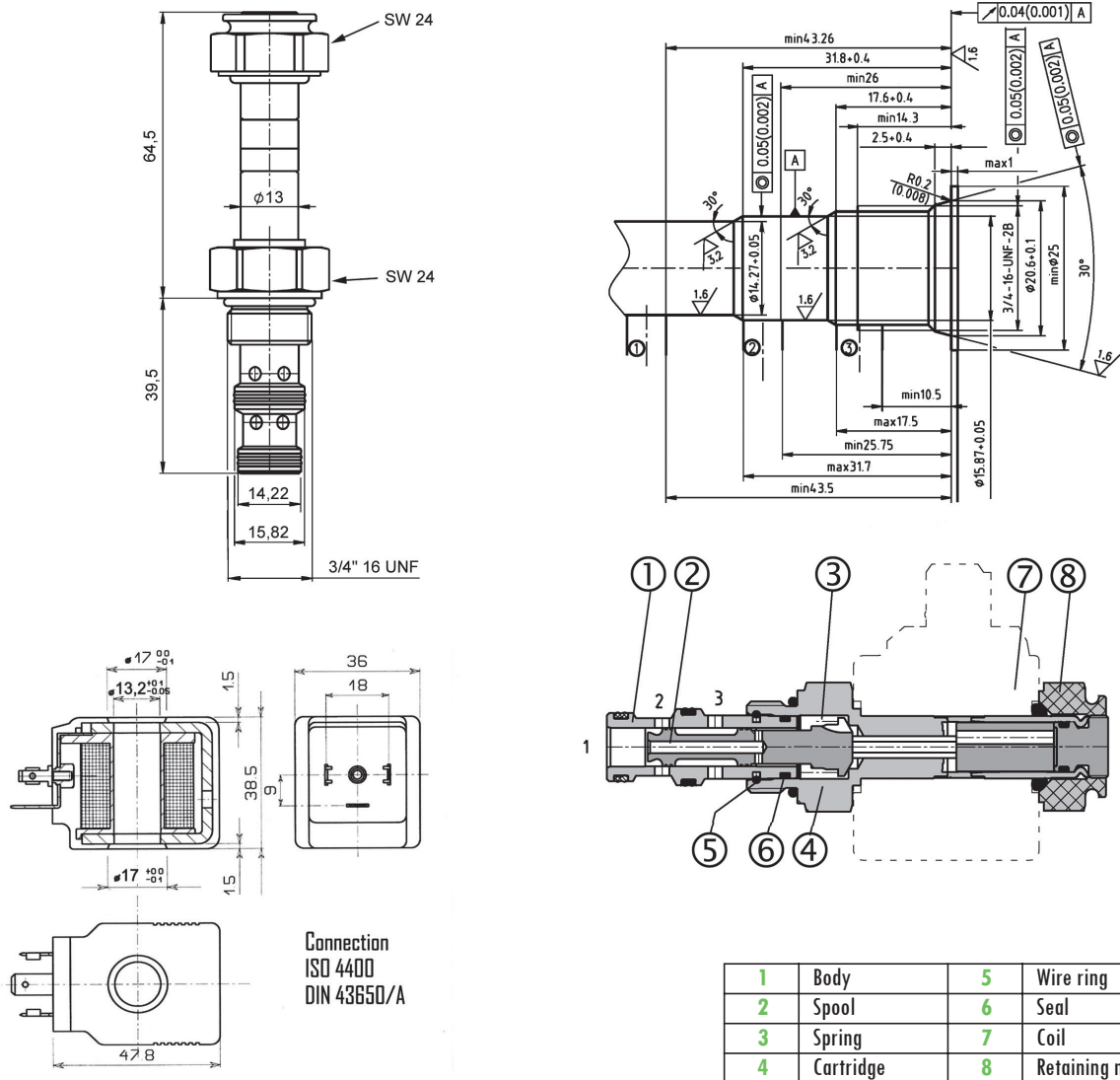


ORDERING CODE	
<b>EV3C.34.03</b>	
<b>EV3</b>	3-way solenoid operated spool valve
<b>C</b>	<b>C</b> : normally closed (see symbol) <b>O</b> : normally open (see symbol)
<b>34</b>	Nominal size (3/4" 16 UNF)
<b>03</b>	Standard execution

COIL	Ø13 / 22W – Plugs (not included) according to ISO 4400: see table AZ-100
<b>C36-012C</b>	<b>12V DC</b> – 1,9A – 6,3Ω at 20°C – 22,8W nominal power – Insulation class H
<b>C36-024C</b>	<b>24V DC</b> – 0,95A – 25,6Ω at 20°C – 22,5W nominal power – Insulation class H
<b>C36-220R</b>	<b>230V RAC</b> (rectifier plug needed) – 0,11A – 1720Ω at 20°C – 22,3W nominal power – Insulation class H

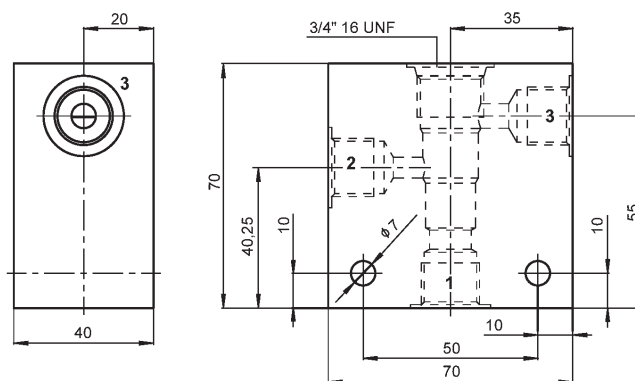


**OVERALL DIMENSIONS**



Subject to technical and dimensional changes without notice

**LINE ASSEMBLY BODY**



Suitable for standard 3-way screw-in valves, cavity  $3/4'' 16 \text{ UNF}$ . Designed for in-line assembly. Material: aluminium.