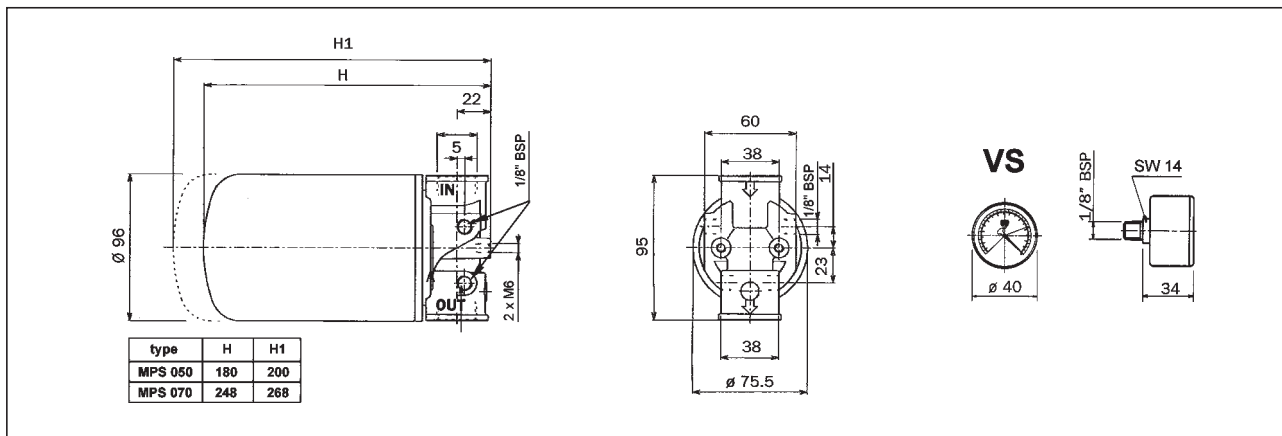


HYDRAULIC SPIN-ON FILTERS type **MPS STR**

- Designed to be installed on return line
- Filtering element in paper
- Filtration standard rate: 25µm
- Max operating pressure: 12bar
- Equipped with a by-pass valve (opening $\Delta p = 1,75\text{bar}$)
- Visual clogging indicator
- When clogged, the filtering cartridge must be replaced



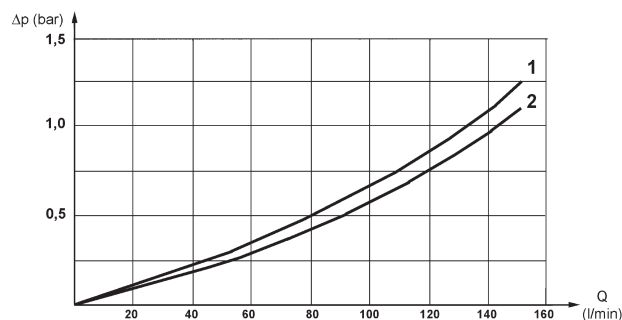
TECHNICAL DATA and DIMENSIONS								
ORDERING CODE	Symbol	QMAX [l/min]	PMAX [bar]	Filtration rate(*) [µm]	Ports	Mass [kg]	Clogging indicator	Filtering element
MPS 050 CG1 P25A		see below	12	25	3/4" BSP	1,0	VS visual	CS 050 P25A B
MPS 070 CG1 P25A		diagrams	12	25	3/4" BSP	1,3	VS visual	CS 070 P25A B



Subject to technical and dimensional changes without notice

TYPICAL DIAGRAMS

Typical Δp -Q curves for MPS spin-on filters with mineral oil at 42cSt and 60°C



1) MPS 050 CG1 P25A 2) MPS 070 CG1 P25A

Diagrams refer to pressure loss through filter body+standard filtering element. In case of different filtering element ask our technical department